

CBX6 Polyclonal Antibody

Description

Product type	Primary Antibody
Code	BT-AP01280
Host	Rabbit
Isotype	IgG
Size	20ul, 50ul, 100ul
Immunogen	The antiserum was produced against synthesized peptide derived from human CBX6. AA range:10-59
Mol wt	43898
Species reactivity	Human, Mouse, Rat
Clonality	Polyclonal
Recommended application	WB, IHC-p, ELISA
Concentration	1 mg/ml
Full name	CBX6 Antibody
Synonyms	CBX6; Chromobox protein homolog 6

This product is for research use only, not for use in human, therapeutic or diagnostic procedure.

Background

The Chromobox domain (Cbx) gene family, consisting of Polycomb and Heterochromatin Protein 1 genes, involves in transcriptional repression, cell cycle regulation and chromatin remodeling [PMID: 17486619]. Cbx6, other named neuronal pentraxin receptor (NPR), first described as a putative integral membrane pentraxin that interacts with neuronal pentraxin 1 and 2, has also been classified as a Pc protein [PMID: 14647293]. NPR was determined to be a member of a distinct pentraxin protein subfamily, and found to form heteropentamer with NP1 and NP2, followed by release from cell membranes [PMID: 10748068].

Recommended Dilution

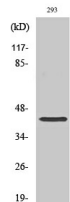
WB: 1: 500 - 1: 2000

IHC: 1: 100 - 1: 300

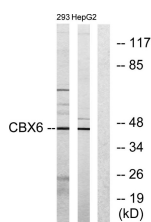
ELISA: 1: 20000

Not yet tested in other applications.

Images



Western Blot analysis of various cells using CBX6 Polyclonal Antibody cells nucleus.



Western blot analysis of lysates from 293 and HepG2 cells, using CBX6 Antibody. The lane on the right is blocked with the synthesized peptide.

Storage

-20°C for one year

501 Changsheng S Rd, Nanhu Dist, Jiaxing, Zhejiang, China

Tel: 86 21 31007137 | E-mail: save@bt-laboratory.com | www.bt-laboratory.com