

CCDC102A Polyclonal Antibody

Description

Product type	Primary Antibody
Code	BT-AP01289
Host	Rabbit
Isotype	IgG
Size	20ul, 50ul, 100ul
Immunogen	The antiserum was produced against synthesized peptide derived from human CCDC102A. AA range:341-390
Mol wt	62626
Species reactivity	Human, Mouse
Clonality	Polyclonal
Recommended application	WB, ELISA
Concentration	1 mg/ml
Full name	CCDC102A Antibody
Synonyms	CCDC102A; Coiled-coil domain-containing protein 102A

This product is for research use only, not for use in human, therapeutic or diagnostic procedure.

Background

CCDC102A (Coiled-Coil Domain Containing 102A) is a Protein Coding gene. An important paralog of this gene is CCDC102B.

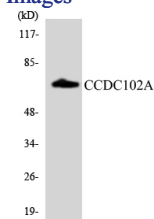
Recommended Dilution

WB: 1: 500 - 1: 2000

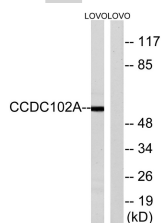
ELISA: 1: 20000

Not yet tested in other applications.

Images



Western blot analysis of the lysates from HepG2 cells using CCDC102A antibody.



Western blot analysis of lysates from LOVO cells, using CCDC102A Antibody. The lane on the right is blocked with the synthesized peptide.

Storage

-20°C for one year