

CCDC102B Polyclonal Antibody

Description

Product type	Primary Antibody
Code	BT-AP01290
Host	Rabbit
Isotype	IgG
Size	20ul, 50ul, 100ul
Immunogen	The antiserum was produced against synthesized peptide derived from human CCDC102B. AA range:81-130
Mol wt	60432
Species reactivity	Human
Clonality	Polyclonal
Recommended application	WB, IHC-p, ELISA
Concentration	1 mg/ml
Full name	CCDC102B Antibody
Synonyms	CCDC102B; C18orf14; Coiled-coil domain-containing protein 102B

This product is for research use only, not for use in human, therapeutic or diagnostic procedure.

Background

CCDC102B (coiled-coil domain containing 102B), also known as AN, ACY1L or HsT1731, is a 513 amino acid protein that exists as three alternatively spliced isoforms. Widely expressed and found in multiple CNV (copy-number variant) regions, CCDC102B contains the deletion breakpoint of a maternally inherited deletion, which is 2.7 Mb in size, and maps to human chromosome 18q22.1. CCDC102B may play a role in the pathogenesis of diaphragmatic hernia, microphthalmia, colorectal carcinoma and schizophrenia. Encoding over 300 genes, chromosome 18 contains about 76 million bases. Translocation between chromosomes 18 and 14 is the most common translocation in cancers and occurs in follicular lymphomas. Niemann-Pick disease, hereditary hemorrhagic telangiectasia and erythropoietic protoporphyria are associated with chromosome 18.

Recommended Dilution

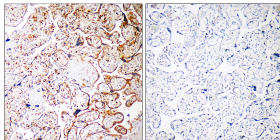
WB: 1: 500 - 1: 2000

IHC: 1: 100 - 1: 300

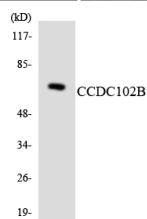
ELISA: 1: 40000

Not yet tested in other applications.

Images



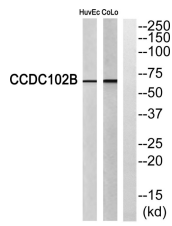
Immunohistochemistry analysis of paraffin-embedded human placenta, using CCDC102B Antibody. The lane on the right is blocked with the CCDC102B peptide.



Western blot analysis of the lysates from HUVEC cells using CCDC102B antibody.



Western Blot analysis of various cells using CCDC102B Polyclonal Antibody diluted at 1:1000



Western blot analysis of CCDC102B Antibody. The lane on the right is blocked with the CCDC102B peptide.

Storage

-20°C for one year

501 Changsheng S Rd, Nanhu Dist, Jiaxing, Zhejiang, China

Tel: 86 21 31007137 | E-mail: save@bt-laboratory.com | www.bt-laboratory.com