

CCDC99 Polyclonal Antibody

Description

Product type	Primary Antibody
Code	BT-AP01295
Host	Rabbit
Isotype	IgG
Size	20ul, 50ul, 100ul
Immunogen	The antiserum was produced against synthesized peptide derived from human CCDC99. AA range:541-590
Mol wt	70120
Species reactivity	Human
Clonality	Polyclonal
Recommended application	WB, ELISA
Concentration	1 mg/ml
Full name	CCDC99 Antibody
Synonyms	CCDC99; Protein Spindly; hSpindly; Arsenite-related gene 1 protein; Coiled-coil domain-containing protein 99; Rhabdomyosarcoma antigen MU-RMS-40.4A

This product is for research use only, not for use in human, therapeutic or diagnostic procedure.

Background

SPDL1 (spindle apparatus coiled-coil protein 1) encodes a coiled-coil domain-containing protein that functions in mitotic spindle formation and chromosome segregation. The encoded protein plays a role in coordinating microtubule attachment by promoting recruitment of dynein proteins, and in mitotic checkpoint signaling.

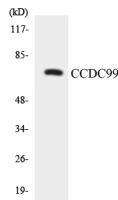
Recommended Dilution

WB: 1: 500 - 1: 2000

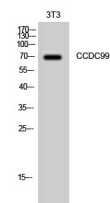
ELISA: 1: 40000

Not yet tested in other applications.

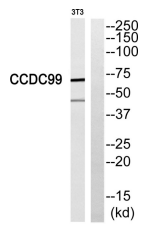
Images



Western blot analysis of the lysates from K562 cells using CCDC99 antibody.



Western Blot analysis of 3T3 cells using CCDC99 Polyclonal Antibody diluted at 1:1000



Western blot analysis of CCDC99 Antibody. The lane on the right is blocked with the CCDC99 peptide.

Storage

-20°C for one year

501 Changsheng S Rd, Nanhu Dist, Jiaxing, Zhejiang, China

Tel: 86 21 31007137 | E-mail: save@bt-laboratory.com | www.bt-laboratory.com