

Op18(Phospho Ser16) Polyclonal Antibody

Description

Product type	Primary Antibody
Code	BT-AP01304
Host	Rabbit
Isotype	IgG
Size	20ul, 50ul, 100ul
Immunogen	The antiserum was produced against synthesized peptide derived from human Stathmin 1 around the phosphorylation site of Ser15. AA range:5-54
Mol wt	17303
Species reactivity	Human, Mouse, Rat
Clonality	Polyclonal
Recommended application	WB, IHC-p, IF, ICC, ELISA
Concentration	1 mg/ml
Full name	Stathmin
Synonyms	Stathmin; STMN1; C1orf215; LAP18; OP18; Stathmin; Leukemia-associated phosphoprotein p18; Metablastin; Oncoprotein 18; Op18; Phosphoprotein p19; pp19; Prosolin; Protein Pr22; pp17

This product is for research use only, not for use in human, therapeutic or diagnostic procedure.

Background

This gene belongs to the stathmin family of genes. It encodes a ubiquitous cytosolic phosphoprotein proposed to function as an intracellular relay integrating regulatory signals of the cellular environment. The encoded protein is involved in the regulation of the microtubule filament system by destabilizing microtubules. It prevents assembly and promotes disassembly of microtubules. Multiple transcript variants encoding different isoforms have been found for this gene.

Recommended Dilution

WB: 1: 500 - 1: 2000

IHC-p: 1: 100 - 1: 300

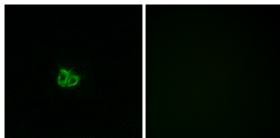
IF: 1: 200 - 1: 1000

ICC: 1: 200 - 1: 1000

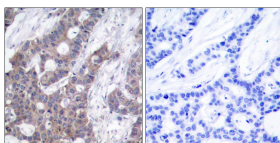
ELISA: 1: 10000

Not yet tested in other applications.

Images



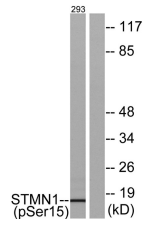
Immunofluorescence analysis of COS7 cells, using Stathmin 1 (Phospho-Ser15) Antibody. The picture on the right is blocked with the phospho peptide.



Immunohistochemistry analysis of paraffin-embedded human breast carcinoma, using Stathmin 1 (Phospho-Ser15) Antibody. The picture on the right is blocked with the phospho peptide.



Western Blot analysis of various cells using Phospho-Op18 (S16) Polyclonal Antibody



Western blot analysis of lysates from 293 cells, using Stathmin 1 (Phospho-Ser15) Antibody. The lane on the right is blocked with the phospho peptide.

Storage

-20°C for 1 year

501 Changsheng S Rd, Nanhu Dist, Jiaxing, Zhejiang, China

Tel: 86 21 31007137 | E-mail: save@bt-laboratory.com | www.bt-laboratory.com