

CDC37(Phospho-Ser13) Rabbit Polyclonal Antibody

Description

Product type	Primary Antibody
Code	BT-AP01317
Host	Rabbit
Isotype	IgG
Size	20ul, 50ul, 100ul
Immunogen	Synthesized phosho peptide around human CDC37 (Ser13)
Mol wt	N/A
Species reactivity	Human, Mouse, Rat
Clonality	Polyclonal
Recommended application	WB
Concentration	1 mg/ml
Full name	CDC37
Synonyms	CDC37 (Ser13) ; Hsp90 co-chaperone Cdc37; Hsp90 chaperone protein kinase-targeting subunit; p50Cdc37

This product is for research use only, not for use in human, therapeutic or diagnostic procedure.

Background

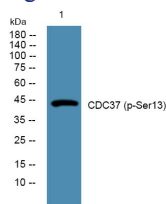
The protein encoded by this gene is highly similar to Cde 37, a cell division cycle control protein of *Sacchomyces cerevisiae*. This protein is a molecular chaperone with specific function in cell signal transduction. It has been shown to form complex with Hsp90 and a variety of protein kinases including CDK4, CDK6, SRC, RAF-1, MOK, as well as eIF2 alpha kinases. It is thought to play a critical role in directing Hsp90 to its target kinases.

Recommended Dilution

WB: 1: 1000 - 1: 2000

Not yet tested in other applications.

Images



Western blot analysis of lysates from K562 cells, primary antibody was diluted at 1:1000, 4°C overnight

Storage

-20°C for 1 year