

CCP3 Polyclonal Antibody

Description

Product type	Primary Antibody
Code	BT-AP01319
Host	Rabbit
Isotype	IgG
Size	20ul, 50ul, 100ul
Immunogen	The antiserum was produced against synthesized peptide derived from human AGL3. AA range:611-660
Mol wt	116011
Species reactivity	Human
Clonality	Polyclonal
Recommended application	IHC-p, ELISA
Concentration	1 mg/ml
Full name	CCP3 Antibody
Synonyms	AGL3; CCP3; Cytosolic carboxypeptidase 3; ATP/GTP-binding protein-like 3

This product is for research use only, not for use in human, therapeutic or diagnostic procedure.

Background

AGL3 (ATP/GTP Binding Protein-Like 3) is a Protein Coding gene. Diseases associated with AGL3 include dyskinesia of esophagus. GO annotations related to this gene include metalloproteinase activity. An important paralog of this gene is AGL2.

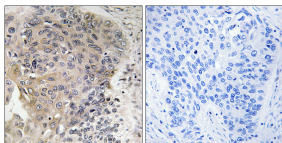
Recommended Dilution

IHC: 1: 100 - 1: 300

ELISA: 1: 20000

Not yet tested in other applications.

Images



Immunohistochemistry analysis of paraffin-embedded human lung carcinoma, using CBCP3 Antibody. The picture on the right is blocked with the synthesized peptide.

Storage

-20°C for one year

501 Changsheng S Rd, Nanhu Dist, Jiaxing, Zhejiang, China

Tel: 86 21 31007137 | E-mail: save@bt-laboratory.com | www.bt-laboratory.com