

CCRK Polyclonal Antibody

Description

Product type	Primary Antibody
Code	BT-AP01324
Host	Rabbit
Isotype	IgG
Size	20ul, 50ul, 100ul
Immunogen	The antiserum was produced against synthesized peptide derived from human CCRK. AA range:31-80
Mol wt	38695
Species reactivity	Human, Mouse, Rat
Clonality	Polyclonal
Recommended application	WB, IHC-p, IF, ELISA
Concentration	1 mg/ml
Full name	CCRK Antibody
Synonyms	CDK20; CCRK; CDCH; Cyclin-dependent kinase 20; CDK-activating kinase p42; CAK-kinase p42; Cell cycle-related kinase; Cell division protein kinase 20; Cyclin-dependent protein kinase H; Cyclin-kinase-a

This product is for research use only, not for use in human, therapeutic or diagnostic procedure.

Background

The cyclin dependent kinase 20 encoded by this gene contains a kinase domain most closely related to the cyclin-dependent protein kinases. The encoded kinase may activate cyclin-dependent kinase 2 and is involved in cell growth. Alternatively spliced transcript variants encoding distinct isoforms have been reported.

Recommended Dilution

WB: 1: 500 - 1: 2000

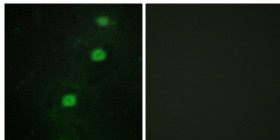
IHC: 1: 100 - 1: 300

IF: 1: 200 - 1: 1000

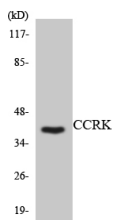
ELISA: 1: 20000

Not yet tested in other applications.

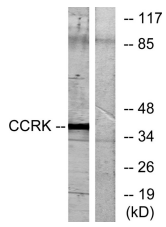
Images



Immunofluorescence analysis of HUVEC cells, using CCRK Antibody. The picture on the right is blocked with the synthesized peptide.



Western blot analysis of the lysates from RAW264.7 cells using CCRK antibody.



Western blot analysis of lysates from RAW264.7 cells, using CCRK Antibody. The lane on the right is blocked with the synthesized peptide.

Storage

-20°C for one year

501 Changsheng S Rd, Nanhu Dist, Jiaxing, Zhejiang, China

Tel: 86 21 31007137 | E-mail: save@bt-laboratory.com | www.bt-laboratory.com