

CCRL1 Polyclonal Antibody

Description

Product type	Primary Antibody
Code	BT-AP01326
Host	Rabbit
Isotype	IgG
Size	20ul, 50ul, 100ul
Immunogen	The antiserum was produced against synthesized peptide derived from human CCRL1. AA range:5-54
Mol wt	39914
Species reactivity	Human, Mouse
Clonality	Polyclonal
Recommended application	WB, IF, ELISA
Concentration	1 mg/ml
Full name	CCRL1 Antibody
Synonyms	CCRL1; CCBP2; CCR11; VSHK1; C-C chemokine receptor type 11; C-C CKR-11; CC-CKR-11; CCR-11; CC chemokine receptor-like 1; CCRL1; CCX CKR

This product is for research use only, not for use in human, therapeutic or diagnostic procedure.

Background

The protein encoded by ACKR4 is a member of the G protein-coupled receptor family, and is a receptor for C-C type chemokines. Atypical chemokine receptor 4 has been shown to bind dendritic cell- and T cell-activated chemokines including CCL19/ELC, CCL21/SLC, and CCL25/TECK. A pseudogene of ACKR4 is found on chromosome 6. Alternatively spliced transcript variants encoding the same protein have been described.

Recommended Dilution

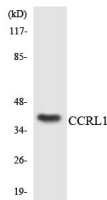
WB: 1: 500 - 1: 2000

IF: 1: 200 - 1: 1000

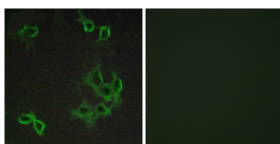
ELISA: 1: 5000

Not yet tested in other applications.

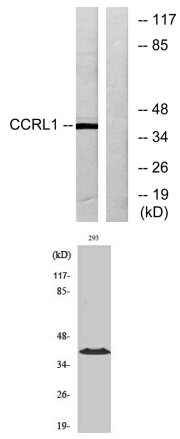
Images



Western blot analysis of the lysates from HepG2 cells using CCRL1 antibody.



Immunofluorescence analysis of COS7 cells, using CCRL1 Antibody. The picture on the right is blocked with the synthesized peptide.



Western blot analysis of lysates from 293 cells, using CCRL1 Antibody. The lane on the right is blocked with the synthesized peptide.

Western Blot analysis of various cells using CCRL1 Polyclonal Antibody diluted at 1:1000

Storage

-20°C for one year

501 Changsheng S Rd, Nanhu Dist, Jiaxing, Zhejiang, China

Tel: 86 21 31007137 | E-mail: save@bt-laboratory.com | www.bt-laboratory.com