

CD107a Polyclonal Antibody

Description

Product type	Primary Antibody
Code	BT-AP01335
Host	Rabbit
Isotype	IgG
Size	20ul, 50ul, 100ul
Immunogen	The antiserum was produced against synthesized peptide derived from the Internal region of human LAMP1. AA range:211-260
Mol wt	44882
Species reactivity	Human, Rat
Clonality	Polyclonal
Recommended application	WB, ELISA
Concentration	1 mg/ml
Full name	CD107a Antibody
Synonyms	LAMP1; Lysosome-associated membrane glycoprotein 1; LAMP-1; Lysosome-associated membrane protein 1; CD107 antigen-like family member A; CD107a

This product is for research use only, not for use in human, therapeutic or diagnostic procedure.

Background

Lysosome-associated membrane glycoprotein 1 encoded by LAMP1 is a member of a family of membrane glycoproteins. This glycoprotein provides selectins with carbohydrate ligands. It may also play a role in tumor cell metastasis.

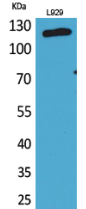
Recommended Dilution

WB: 1: 500 - 1: 2000

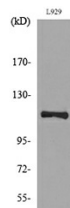
ELISA: 1: 20000

Not yet tested in other applications.

Images



Western Blot analysis of L929 cells using CD107a Polyclonal Antibody. Secondary antibody was diluted at 1:20000



Western blot analysis of lysate from L929 cells, using LAMP1 Antibody.

Storage

-20°C for one year

501 Changsheng S Rd, Nanhu Dist, Jiaxing, Zhejiang, China

Tel: 86 21 31007137 | E-mail: save@bt-laboratory.com | www.bt-laboratory.com