

CD108 Polyclonal Antibody

Description

Product type	Primary Antibody
Code	BT-AP01338
Host	Rabbit
Isotype	IgG
Size	20ul, 50ul, 100ul
Immunogen	Synthesized peptide derived from CD108 . at AA range: 150-230
Mol wt	45100
Species reactivity	Human, Mouse, Rat
Clonality	Polyclonal
Recommended application	WB, ELISA
Concentration	1 mg/ml
Full name	CD108 Antibody
Synonyms	SEMA7A; CD108; SEMAL; Semaphorin-7A; CDw108; JMH blood group antigen; John-Milton-Hargen human blood group Ag; Semaphorin-K1; Sema K1; Semaphorin-L; Sema L; CD antigen CD108

This product is for research use only, not for use in human, therapeutic or diagnostic procedure.

Background

The protein encoded by LAMP2 (lysosomal associated membrane protein 2) is a member of a family of membrane glycoproteins. This glycoprotein provides selectins with carbohydrate ligands. It may play a role in tumor cell metastasis. It may also function in the protection, maintenance, and adhesion of the lysosome. Alternative splicing of LAMP2 results in multiple transcript variants encoding distinct proteins.

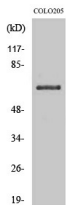
Recommended Dilution

WB: 1: 500 - 1: 2000

ELISA: 1: 5000

Not yet tested in other applications.

Images



Western Blot analysis of various cells using CD108 Polyclonal Antibody

Storage

-20°C for one year