

## CD116 Polyclonal Antibody

### Description

Product type	Primary Antibody
Code	BT-AP01342
Host	Rabbit
Isotype	IgG
Size	20ul, 50ul, 100ul
Immunogen	Synthesized peptide derived from the Internal region of human CD116.
Mol wt	46207
Species reactivity	Human
Clonality	Polyclonal
Recommended application	WB, ELISA
Concentration	1 mg/ml
Full name	CD116 Antibody
Synonyms	CSF2RA; CSF2R; CSF2RY; Granulocyte-macrophage colony-stimulating factor receptor subunit alpha; GM-CSF-R-alpha; GMCSFR-alpha; GMR-alpha; CDw116; CD antigen CD116

This product is for research use only, not for use in human, therapeutic or diagnostic procedure.

### Background

Granulocyte-macrophage colony-stimulating factor receptor subunit alpha encoded by CSF2RA is the alpha subunit of the heterodimeric receptor for colony stimulating factor 2, a cytokine which controls the production, differentiation, and function of granulocytes and macrophages. The encoded protein is a member of the cytokine family of receptors. This gene is found in the pseudoautosomal region (PAR) of the X and Y chromosomes. Multiple transcript variants encoding different isoforms have been found for this gene, with some of the isoforms being membrane-bound and others being soluble.

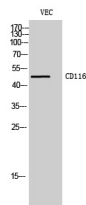
### Recommended Dilution

WB: 1: 500 - 1: 2000

ELISA: 1: 20000

Not yet tested in other applications.

### Images



Western Blot analysis of VEC cells using CD116 Polyclonal Antibody diluted at 1:2000

### Storage

-20°C for one year