

CD138 Polyclonal Antibody

Description

Product type	Primary Antibody
Code	BT-AP01354
Host	Rabbit
Isotype	IgG
Size	20ul, 50ul, 100ul
Immunogen	The antiserum was produced against synthesized peptide derived from human SDC1. AA range:91-140
Mol wt	32462
Species reactivity	Human, Rat
Clonality	Polyclonal
Recommended application	WB, ELISA
Concentration	1 mg/ml
Full name	CD138 Antibody
Synonyms	SDC1; SDC; Syndecan-1; SYND1; CD antigen CD138

This product is for research use only, not for use in human, therapeutic or diagnostic procedure.

Background

The protein (syndecan 1) encoded by SDC1 is a transmembrane (type I) heparan sulfate proteoglycan and is a member of the syndecan proteoglycan family. The syndecans mediate cell binding, cell signaling, and cytoskeletal organization and syndecan receptors are required for internalization of the HIV-1 tat protein. The syndecan-1 protein functions as an integral membrane protein and participates in cell proliferation, cell migration and cell-matrix interactions via its receptor for extracellular matrix proteins. Altered syndecan-1 expression has been detected in several different tumor types. While several transcript variants may exist for this gene, the full-length nature of only two have been described to date. These two represent the major variants of SDC1 and encode the same protein.

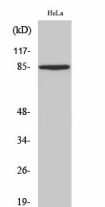
Recommended Dilution

WB: 1: 500 - 1: 2000

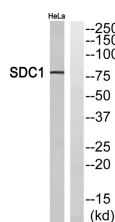
ELISA: 1: 20000

Not yet tested in other applications.

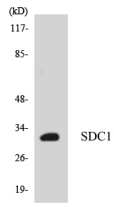
Images



Western Blot analysis of various cells using CD138 Polyclonal Antibody



Western blot analysis of SDC1 Antibody. The lane on the right is blocked with the SDC1 peptide.



Western blot analysis of the lysates from HepG2 cells using SDC1 antibody.

Storage

-20°C for one year

501 Changsheng S Rd, Nanhu Dist, Jiaxing, Zhejiang, China

Tel: 86 21 31007137 | E-mail: save@bt-laboratory.com | www.bt-laboratory.com