

PCNA Polyclonal Antibody

Description

Product type	Primary Antibody
Code	BT-AP01367
Host	Rabbit
Isotype	IgG
Size	20ul, 50uL, 100ul
Immunogen	The antiserum was produced against synthesized peptide derived from human PCNA. AA range:61-110
Mol wt	28769
Species reactivity	Human, Mouse, Rat, Monkey
Clonality	Polyclonal
Recommended application	WB, IHC-p, IF, ELISA
Concentration	1 mg/ml
Full name	Proliferating cell nuclear antigen
Synonyms	Proliferating cell nuclear antigen; PCNA; Proliferating cell nuclear antigen; PCNA; Cyclin

This product is for research use only, not for use in human, therapeutic or diagnostic procedure.

Background

The protein encoded by this gene is found in the nucleus and is a cofactor of DNA polymerase delta. The encoded protein acts as a homotrimer and helps increase the processivity of leading strand synthesis during DNA replication. In response to DNA damage, this protein is ubiquitinated and is involved in the RAD6-dependent DNA repair pathway. Two transcript variants encoding the same protein have been found for this gene. Pseudogenes of this gene have been described on chromosome 4 and on the X chromosome.

Recommended Dilution

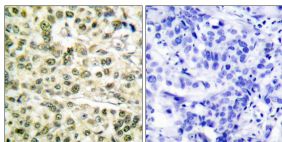
WB: 1: 500 - 1: 2000

IHC-p: 1: 100 - 1: 300

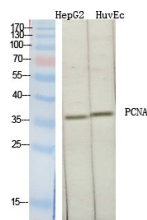
ELISA: 1: 20000

Not yet tested in other applications.

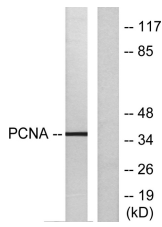
Images



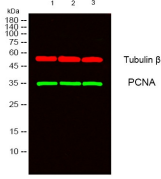
Immunohistochemistry analysis of paraffin-embedded human breast carcinoma tissue, using PCNA Antibody. The picture on the right is blocked with the synthesized peptide.



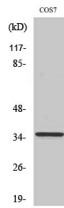
Western blot analysis of lysates from 1) HepG2, 2) HuvEC, 3) COS7 cells. (Green) primary antibody was diluted at 1:1000, 4°C overnight, secondary antibody was diluted at 1:10000, 37°C 1hour. (Red) Tubulin β Monoclonal Antibody(5G3) was diluted at 1:5000 as loading control, 4°C overnight, secondary antibody was diluted at 1:10000, 37°C 1hour.



Western Blot analysis of various cells using PCNA Polyclonal Antibody diluted at 1:2000



Western Blot analysis of COS7 cells using PCNA Polyclonal Antibody diluted at 1:2000



Western blot analysis of lysates from HepG2 cells, using PCNA Antibody. The lane on the right is blocked with the synthesized peptide.

Storage

-20°C for 1 year

501 Changsheng S Rd, Nanhu Dist, Jiaxing, Zhejiang, China

Tel: 86 21 31007137 | E-mail: save@bt-laboratory.com | www.bt-laboratory.com