

CD169 Polyclonal Antibody

Description

| | |
|--------------------------------|--|
| Product type | Primary Antibody |
| Code | BT-AP01382 |
| Host | Rabbit |
| Isotype | IgG |
| Size | 20ul, 50ul, 100ul |
| Immunogen | The antiserum was produced against synthesized peptide derived from the Internal region of human SIGLEC1. AA range:1321-1370 |
| Mol wt | 182624 |
| Species reactivity | Human |
| Clonality | Polyclonal |
| Recommended application | WB, ELISA |
| Concentration | 1 mg/ml |
| Full name | CD169 Antibody |
| Synonyms | SIGLEC1; SN; Sialoadhesin; Sialic acid-binding Ig-like lectin 1; Siglec-1; CD169 |

This product is for research use only, not for use in human, therapeutic or diagnostic procedure.

Background

SIGLEC1 encodes a member of the immunoglobulin superfamily. The sialic acid binding Ig like lectin 1 is a lectin-like adhesion molecule that binds glycoconjugate ligands on cell surfaces in a sialic acid-dependent manner. It is a type I transmembrane protein expressed only by a subpopulation of macrophages and is involved in mediating cell-cell interactions. Alternative splicing produces a transcript variant encoding an isoform that is soluble rather than membrane-bound; however, the full-length nature of this variant has not been determined.

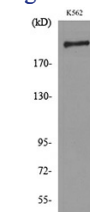
Recommended Dilution

WB: 1: 500 - 1: 2000

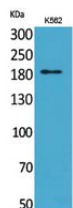
ELISA: 1: 20000

Not yet tested in other applications.

Images



Western blot analysis of lysate from K562 cells, using SIGLEC1 Antibody.



Western Blot analysis of K562 cells using CD169 Polyclonal Antibody. Secondary antibody was diluted at 1:20000

Storage

-20°C for one year

501 Changsheng S Rd, Nanhu Dist, Jiaxing, Zhejiang, China

Tel: 86 21 31007137 | E-mail: save@bt-laboratory.com | www.bt-laboratory.com