

CD180 Polyclonal Antibody

Description

Product type	Primary Antibody
Code	BT-AP01387
Host	Rabbit
Isotype	IgG
Size	20ul, 50ul, 100ul
Immunogen	Synthesized peptide derived from CD180 antigen at AA range: 221-270
Mol wt	74165
Species reactivity	Human, Mouse, Rat
Clonality	Polyclonal
Recommended application	WB, ELISA
Concentration	1 mg/ml
Full name	CD180 Antibody
Synonyms	CD180; LY64; RP105; CD180 antigen; Lymphocyte antigen 64; Radioprotective 105 kDa protein; CD180

This product is for research use only, not for use in human, therapeutic or diagnostic procedure.

Background

CD180 is a cell surface molecule consisting of extracellular leucine-rich repeats (LRR) and a short cytoplasmic tail. The extracellular LRR is associated with a molecule called MD-1 and form the cell surface receptor complex, RP105/MD-1. It belongs to the family of pathogen receptors, Toll-like receptors (TLR). RP105/MD1, by working in concert with TLR4, controls B cell recognition and signaling of lipopolysaccharide (LPS), a membrane constituent of Gram-negative bacteria.

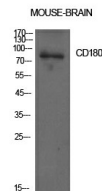
Recommended Dilution

WB: 1: 500 - 1: 2000

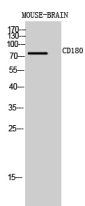
ELISA: 1: 10000

Not yet tested in other applications.

Images



Western Blot analysis of mouse brain cells using CD180 Polyclonal Antibody. Antibody was diluted at 1:1000. Secondary antibody was diluted at 1:20000



Western Blot analysis of MOUSE-BRAIN cells using CD180 Polyclonal Antibody diluted at 1:1000. Secondary antibody was diluted at 1:20000

Storage

-20°C for one year

501 Changsheng S Rd, Nanhu Dist, Jiaxing, Zhejiang, China

Tel: 86 21 31007137 | E-mail: save@bt-laboratory.com | www.bt-laboratory.com