

## CD201 Polyclonal Antibody

### Description

Product type	Primary Antibody
Code	BT-AP01401
Host	Rabbit
Isotype	IgG
Size	20ul, 50ul, 100ul
Immunogen	Synthesized peptide derived from Endothelial protein C receptor at AA range: 141-190
Mol wt	26671
Species reactivity	Human, Mouse, Rat
Clonality	Polyclonal
Recommended application	WB, IHC-p, ELISA
Concentration	1 mg/ml
Full name	CD201 Antibody
Synonyms	PROCR; EPCR; Endothelial protein C receptor; Activated protein C receptor; APC receptor; Endothelial cell protein C receptor; CD201

This product is for research use only, not for use in human, therapeutic or diagnostic procedure.

### Background

Endothelial protein C receptor encoded by PROCR is a receptor for activated protein C, a serine protease activated by and involved in the blood coagulation pathway. The encoded protein is an N-glycosylated type I membrane protein that enhances the activation of protein C. Mutations in this gene have been associated with venous thromboembolism and myocardial infarction, as well as with late fetal loss during pregnancy. The encoded protein may also play a role in malarial infection and has been associated with cancer.

### Recommended Dilution

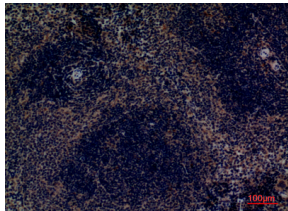
WB: 1: 500 - 1: 2000

IHC-p: 1: 100 - 300

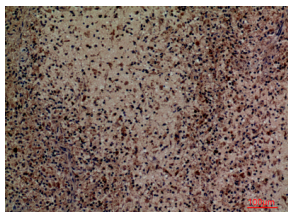
ELISA: 1: 20000

Not yet tested in other applications.

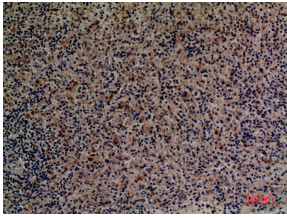
### Images



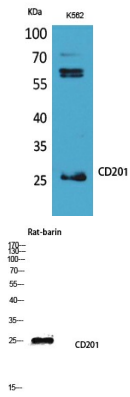
Immunohistochemical analysis of paraffin-embedded mouse-spleen, antibody was diluted at 1:100



Immunohistochemical analysis of paraffin-embedded human-spleen, antibody was diluted at 1:100



Immunohistochemical analysis of paraffin-embedded human-spleen, antibody was diluted at 1:100



Western Blot analysis of K562 cells using CD201 Polyclonal Antibody. Antibody was diluted at 1:500. Secondary antibody was diluted at 1:20000

Western blot analysis of Rat-barin lysis using CD201 antibody. Antibody was diluted at 1:500. Secondary antibody was diluted at 1:20000

### Storage

-20°C for one year

501 Changsheng S Rd, Nanhu Dist, Jiaxing, Zhejiang, China

Tel: 86 21 31007137 | E-mail: [save@bt-laboratory.com](mailto:save@bt-laboratory.com) | [www.bt-laboratory.com](http://www.bt-laboratory.com)