

CD223 Polyclonal Antibody

Description

Product type	Primary Antibody
Code	BT-AP01413
Host	Rabbit
Isotype	IgG
Size	20ul, 50ul, 100ul
Immunogen	The antiserum was produced against synthesized peptide derived from the Internal region of human LAG3. AA range:91-140
Mol wt	57437
Species reactivity	Human
Clonality	Polyclonal
Recommended application	WB, ELISA
Concentration	1 mg/ml
Full name	CD223 Antibody
Synonyms	LAG3; FDC; Lymphocyte activation gene 3 protein; LAG-3; Protein FDC; CD223

This product is for research use only, not for use in human, therapeutic or diagnostic procedure.

Background

Lymphocyte-activation protein 3 belongs to Ig superfamily and contains 4 extracellular Ig-like domains. The LAG3 gene contains 8 exons. The sequence data, exon/intron organization, and chromosomal localization all indicate a close relationship of LAG3 to CD4.

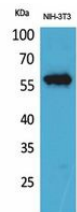
Recommended Dilution

WB: 1: 500 - 1: 2000

ELISA: 1: 20000

Not yet tested in other applications.

Images



Western Blot analysis of NIH-3T3 cells using CD223 Polyclonal Antibody. Secondary antibody was diluted at 1:20000

Storage

-20°C for one year