

CD235a Polyclonal Antibody

Description

Product type	Primary Antibody
Code	BT-AP01418
Host	Rabbit
Isotype	IgG
Size	20ul, 50ul, 100ul
Immunogen	The antiserum was produced against synthesized peptide derived from the Internal region of human GYPA. AA range:41-90
Mol wt	16331
Species reactivity	Human
Clonality	Polyclonal
Recommended application	WB, IHC-p, ELISA
Concentration	1 mg/ml
Full name	CD235a Antibody
Synonyms	GYPA; GPA; Glycophorin-A; MN sialoglycoprotein; PAS-2; Sialoglycoprotein alpha; CD235a

This product is for research use only, not for use in human, therapeutic or diagnostic procedure.

Background

Glycophorins A (GYPA) and B (GYPB) are major sialoglycoproteins of the human erythrocyte membrane which bear the antigenic determinants for the MN and Ss blood groups. In addition to the M or N and S or s antigens that commonly occur in all populations, about 40 related variant phenotypes have been identified. These variants include all the variants of the Miltenberger complex and several isoforms of Sta, as well as Dantu, Sat, He, Mg, and deletion variants Ena, S-s-U- and Mk. Most of the variants are the result of gene recombinations between GYPA and GYPB.

Recommended Dilution

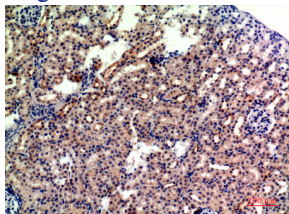
WB: 1: 500 - 1: 2000

IHC-p: 1: 100 - 1: 300

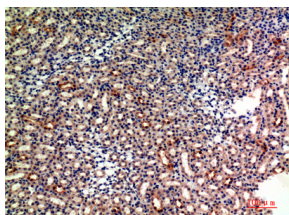
ELISA: 1: 10000

Not yet tested in other applications.

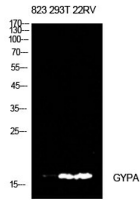
Images



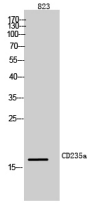
Immunohistochemical analysis of paraffin-embedded mouse-kidney, antibody was diluted at 1:200



Immunohistochemical analysis of paraffin-embedded mouse-kidney, antibody was diluted at 1:200



Western Blot analysis of 823, 293T, 22RV cells using CD235a Polyclonal Antibody. Antibody was diluted at 1:500. Secondary antibody was diluted at 1:20000



Western Blot analysis of 823 cells using CD235a Polyclonal Antibody diluted at 1:500. Secondary antibody was diluted at 1:20000

Storage

-20°C for one year

501 Changsheng S Rd, Nanhu Dist, Jiaxing, Zhejiang, China

Tel: 86 21 31007137 | E-mail: save@bt-laboratory.com | www.bt-laboratory.com