

CD238 Polyclonal Antibody

Description

Product type	Primary Antibody
Code	BT-AP01420
Host	Rabbit
Isotype	IgG
Size	20ul, 50ul, 100ul
Immunogen	The antiserum was produced against synthesized peptide derived from the Internal region of human KEL. AA range:351-400
Mol wt	82824
Species reactivity	Human
Clonality	Polyclonal
Recommended application	WB, ELISA
Concentration	1 mg/ml
Full name	CD238 Antibody
Synonyms	Kell blood group, metallo-endopeptidase

This product is for research use only, not for use in human, therapeutic or diagnostic procedure.

Background

KEL (Kell blood group, metallo-endopeptidase) encodes a type II transmembrane glycoprotein that is the highly polymorphic Kell blood group antigen. The Kell glycoprotein links via a single disulfide bond to the XK membrane protein that carries the Kx antigen. The encoded protein contains sequence and structural similarity to members of the neprilysin (M13) family of zinc endopeptidases.

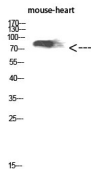
Recommended Dilution

WB: 1: 500 - 2000

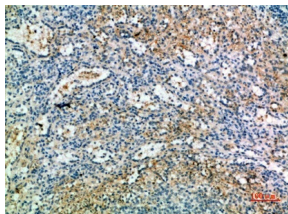
ELISA: 1: 10000 - 20000

Not yet tested in other applications.

Images



Western Blot analysis of mouse-heart cells using CD238 Polyclonal Antibody diluted at 1:1000.
Secondary antibody was diluted at 1:20000



Immunohistochemical analysis of paraffin-embedded human-spleen, antibody was diluted at 1:200

Storage

-20°C for one year

501 Changsheng S Rd, Nanhu Dist, Jiaxing, Zhejiang, China

Tel: 86 21 31007137 | E-mail: save@bt-laboratory.com | www.bt-laboratory.com