

CD24 Polyclonal Antibody

Description

Product type	Primary Antibody
Code	BT-AP01423
Host	Rabbit
Isotype	IgG
Size	20ul, 50ul, 100ul
Immunogen	Synthetic peptide from human protein at AA range: 30-60
Mol wt	67405
Species reactivity	Human
Clonality	Polyclonal
Recommended application	IHC-p, ELISA
Concentration	1 mg/ml
Full name	CD24 Antibody
Synonyms	Signal transducer CD24 (Small cell lung carcinoma cluster 4 antigen) (CD antigen CD24)

This product is for research use only, not for use in human, therapeutic or diagnostic procedure.

Background

BCAM encodes Lutheran blood group glycoprotein, a member of the immunoglobulin superfamily and a receptor for the extracellular matrix protein, laminin. Basal cell adhesion molecule contains five extracellular immunoglobulin domains, a single transmembrane domain, and a short C-terminal cytoplasmic tail. This protein may play a role in epithelial cell cancer and in vaso-occlusion of red blood cells in sickle cell disease. Polymorphisms in this gene define some of the antigens in the Lutheran system and also the Auberger system. Inactivating variants of this gene result in the recessive Lutheran null phenotype, Lu(a-b-), of the Lutheran blood group. Two transcript variants encoding different isoforms have been found for this gene.

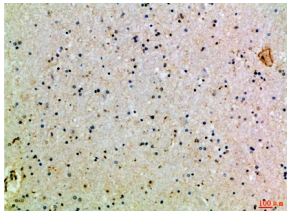
Recommended Dilution

IHC-p: 1: 50 - 200

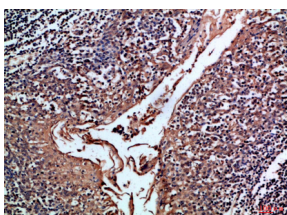
ELISA: 1: 10000 - 20000

Not yet tested in other applications.

Images



Immunohistochemical analysis of paraffin-embedded Human-brain, antibody was diluted at 1:100



Immunohistochemical analysis of paraffin-embedded Human-tonsil, antibody was diluted at 1:100

Storage

-20°C for one year

501 Changsheng S Rd, Nanhu Dist, Jiaxing, Zhejiang, China

Tel: 86 21 31007137 | E-mail: save@bt-laboratory.com | www.bt-laboratory.com