

CD244 Polyclonal Antibody

Description

Product type	Primary Antibody
Code	BT-AP01427
Host	Rabbit
Isotype	IgG
Size	20ul, 50ul, 100ul
Immunogen	The antiserum was produced against synthesized peptide derived from the Internal region of human CD244. AA range:101-150
Mol wt	41616
Species reactivity	Human
Clonality	Polyclonal
Recommended application	WB, IHC-p, ELISA
Concentration	1 mg/ml
Full name	CD244 Antibody
Synonyms	CD244; 2B4; Natural killer cell receptor 2B4; NK cell activation-inducing ligand; NAIL; NK cell type I receptor protein 2B4; NKR2B4; h2B4; CD244

This product is for research use only, not for use in human, therapeutic or diagnostic procedure.

Background

CD244 encodes a cell surface receptor expressed on natural killer (NK) cells (and some T cells) that mediate non-major histocompatibility complex (MHC) restricted killing. The interaction between NK-cell and target cells via this receptor is thought to modulate NK-cell cytolytic activity. Alternatively spliced transcript variants encoding different isoforms have been found for this gene.

Recommended Dilution

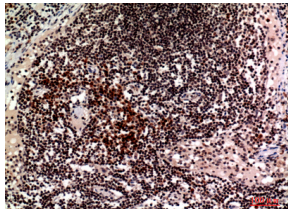
WB: 1: 500 - 1: 2000

IHC-p: 1: 100 - 1: 300

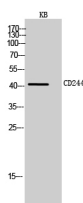
ELISA: 1: 10000

Not yet tested in other applications.

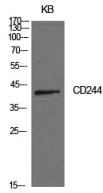
Images



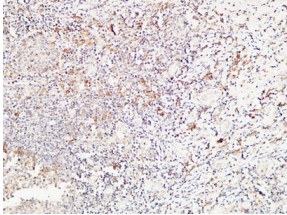
Immunohistochemical analysis of paraffin-embedded human-lymph, antibody was diluted at 1:100



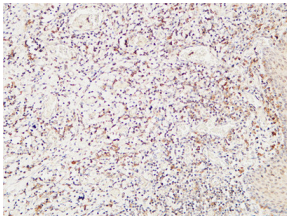
Western Blot analysis of KB cells using CD244 Polyclonal Antibody. Secondary antibody was diluted at 1:20000



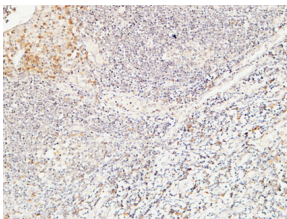
Western Blot analysis of KB cells using CD244 Polyclonal Antibody. Secondary antibody was diluted at 1:20000



Immunohistochemical analysis of paraffin-embedded Human Amygdala. 1, Antibody was diluted at 1:200(4° overnight). 2, High-pressure and temperature EDTA, pH8.0 was used for antigen retrieval. 3,Secondary antibody was diluted at 1:200(room temperature, 30min).



Immunohistochemical analysis of paraffin-embedded Human Amygdala. 1, Antibody was diluted at 1:200(4° overnight). 2, High-pressure and temperature EDTA, pH8.0 was used for antigen retrieval. 3,Secondary antibody was diluted at 1:200(room temperature, 30min).



Immunohistochemical analysis of paraffin-embedded Human Amygdala. 1, Antibody was diluted at 1:200(4° overnight). 2, High-pressure and temperature EDTA, pH8.0 was used for antigen retrieval. 3,Secondary antibody was diluted at 1:200(room temperature, 30min).

Storage

-20°C for one year

501 Changsheng S Rd, Nanhui Dist, Jiaying, Zhejiang, China

Tel: 86 21 31007137 | E-mail: save@bt-laboratory.com | www.bt-laboratory.com