

CD248 Polyclonal Antibody

Description

Product type	Primary Antibody
Code	BT-AP01428
Host	Rabbit
Isotype	IgG
Size	20ul, 50ul, 100ul
Immunogen	The antiserum was produced against synthesized peptide derived from the Internal region of human CD248. AA range:341-390
Mol wt	80859
Species reactivity	Human
Clonality	Polyclonal
Recommended application	WB, ELISA
Concentration	1 mg/ml
Full name	CD248 Antibody
Synonyms	CD248; CD164L1; TEM1; Endosialin; Tumor endothelial marker 1; CD248

This product is for research use only, not for use in human, therapeutic or diagnostic procedure.

Background

May play a role in tumor angiogenesis.

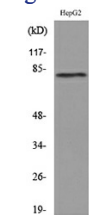
Recommended Dilution

WB: 1: 500 - 1: 2000

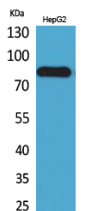
ELISA: 1: 20000

Not yet tested in other applications.

Images



Western blot analysis of lysate from HepG2 cells, using CD248 Antibody.



Western Blot analysis of HepG2 cells using CD248 Polyclonal Antibody. Secondary antibody was diluted at 1:20000

Storage

-20°C for one year