

CD249 Polyclonal Antibody

Description

Product type	Primary Antibody
Code	BT-AP01429
Host	Rabbit
Isotype	IgG
Size	20ul, 50ul, 100ul
Immunogen	The antiserum was produced against synthesized peptide derived from the Internal region of human ENPEP. AA range:671-720
Mol wt	109244
Species reactivity	Human, Mouse, Rat
Clonality	Polyclonal
Recommended application	WB, IHC-p, ELISA
Concentration	1 mg/ml
Full name	CD249 Antibody
Synonyms	ENPEP; Glutamyl aminopeptidase; EAP; Aminopeptidase A; AP-A; Differentiation antigen gp160; CD249

This product is for research use only, not for use in human, therapeutic or diagnostic procedure.

Background

ENPEP (Glutamyl Aminopeptidase) is a Protein Coding gene. Diseases associated with ENPEP include neurogenic hypertension and gestational choriocarcinoma. Among its related pathways are Agents Acting on the Renin-Angiotensin System Pathway, Pharmacodynamics and Peptide hormone metabolism. GO annotations related to this gene include peptidase activity and aminopeptidase activity. An important paralog of this gene is ERAP2.

Recommended Dilution

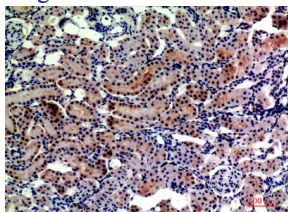
WB: 1: 500 - 1: 2000

IHC-p: 1: 100 - 1: 300

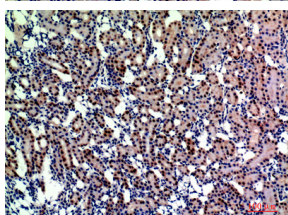
ELISA: 1: 10000

Not yet tested in other applications.

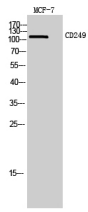
Images



Immunohistochemical analysis of paraffin-embedded rat-kidney, antibody was diluted at 1:200



Immunohistochemical analysis of paraffin-embedded rat-kidney, antibody was diluted at 1:200



Western Blot analysis of MCF7 cells using CD249 Polyclonal Antibody. Secondary antibody was diluted at 1:20000

Storage

-20°C for one year

501 Changsheng S Rd, Nanhu Dist, Jiaxing, Zhejiang, China

Tel: 86 21 31007137 | E-mail: save@bt-laboratory.com | www.bt-laboratory.com