

## CD272 Polyclonal Antibody

### Description

<b>Product type</b>	Primary Antibody
<b>Code</b>	BT-AP01435
<b>Host</b>	Rabbit
<b>Isotype</b>	IgG
<b>Size</b>	20ul, 50ul, 100ul
<b>Immunogen</b>	Synthesized peptide derived from the Internal region of human CD272.
<b>Mol wt</b>	32834
<b>Species reactivity</b>	Human
<b>Clonality</b>	Polyclonal
<b>Recommended application</b>	WB, ELISA
<b>Concentration</b>	1 mg/ml
<b>Full name</b>	CD272 Antibody
<b>Synonyms</b>	BTLA; B- and T-lymphocyte attenuator; B- and T-lymphocyte-associated protein; CD antigen CD272

**This product is for research use only, not for use in human, therapeutic or diagnostic procedure.**

### Background

BTLA encodes a member of the immunoglobulin superfamily. B and T lymphocyte associated contains a single immunoglobulin (Ig) domain and is a receptor that relays inhibitory signals to suppress the immune response. Alternative splicing results in multiple transcript variants. Polymorphisms in this gene have been associated with an increased risk of rheumatoid arthritis.

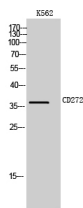
### Recommended Dilution

WB: 1: 500 - 1: 2000

ELISA: 1: 40000

Not yet tested in other applications.

### Images



Western Blot analysis of K562 cells using CD272 Polyclonal Antibody

### Storage

-20°C for one year