

Cdc25A(Phospho Ser75) Polyclonal Antibody

Description

| | |
|--------------------------------|---|
| Product type | Primary Antibody |
| Code | BT-AP01445 |
| Host | Rabbit |
| Isotype | IgG |
| Size | 100ul, 50ul, 20ul |
| Immunogen | Synthesized phospho-peptide around the phosphorylation site of human Cdc25A (phospho Ser75) |
| Mol wt | 59087 |
| Species reactivity | Human, Mouse, Rat |
| Clonality | Polyclonal |
| Recommended application | WB, IHC-p, IF, ELISA |
| Concentration | 1 mg/ml |
| Full name | CDC25A |
| Synonyms | M-phase inducer phosphatase 1; CDC25A; M-phase inducer phosphatase 1; Dual specificity phosphatase Cdc25A |

This product is for research use only, not for use in human, therapeutic or diagnostic procedure.

Background

CDC25A is a member of the CDC25 family of phosphatases. CDC25A is required for progression from G1 to the S phase of the cell cycle. It activates the cyclin-dependent kinase CDC2 by removing two phosphate groups. CDC25A is specifically degraded in response to DNA damage, which prevents cells with chromosomal abnormalities from progressing through cell division. CDC25A is an oncogene, although its exact role in oncogenesis has not been demonstrated. Two transcript variants encoding different isoforms have been found for this gene.

Recommended Dilution

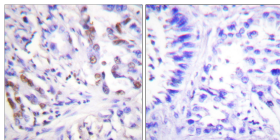
WB: 1: 500 - 1: 2000

IHC-p: 1: 100 - 1: 300

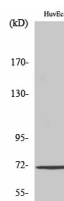
ELISA: 1: 5000

Not yet tested in other applications.

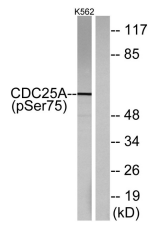
Images



Immunohistochemistry analysis of paraffin-embedded human breast cancer, using CDC25A (Phospho-Ser75) Antibody. The picture on the right is blocked with the CDC25A (Phospho-Ser75) peptide.



Western Blot analysis of various cells using Phospho-Cdc25A (S75) Polyclonal Antibody



Western blot analysis of CDC25A (Phospho-Ser75) Antibody. The lane on the right is blocked with the CDC25A (Phospho-Ser75) peptide.

Storage

-20°C for 1 year

501 Changsheng S Rd, Nanhu Dist, Jiaxing, Zhejiang, China

Tel: 86 21 31007137 | E-mail: save@bt-laboratory.com | www.bt-laboratory.com