

## CDH17 Polyclonal Antibody

### Description

Product type	Primary Antibody
Code	BT-AP01448
Host	Rabbit
Isotype	IgG
Size	100ul, 50ul, 20ul
Immunogen	Synthesized peptide derived from human CDH17 Polyclonal
Mol wt	N/A
Species reactivity	Human, Mouse, Rat
Clonality	Polyclonal
Recommended application	WB, ELISA
Concentration	1 mg/ml
Full name	Cadherin-17
Synonyms	Cadherin-17 (Intestinal peptide-associated transporter HPT-1; Liver-intestine cadherin; LI-cadherin; Cadherin-17; Intestinal peptide-associated transporter HPT-1; Liver-intestine cadherin; LI-cadherin)

This product is for research use only, not for use in human, therapeutic or diagnostic procedure.

### Background

This gene is a member of the cadherin superfamily, genes encoding calcium-dependent, membrane-associated glycoproteins. The encoded protein is cadherin-like, consisting of an extracellular region, containing 7 cadherin domains, and a transmembrane region but lacking the conserved cytoplasmic domain. The protein is a component of the gastrointestinal tract and pancreatic ducts, acting as an intestinal proton-dependent peptide transporter in the first step in oral absorption of many medically important peptide-based drugs. The protein may also play a role in the morphological organization of liver and intestine. Alternative splicing results in multiple transcript variants.

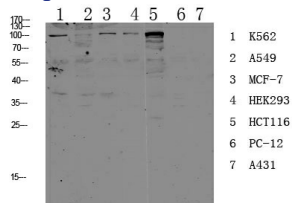
### Recommended Dilution

WB: 1: 500 - 1: 2000

ELISA: 1: 10000 - 1: 20000

Not yet tested in other applications.

### Images



### Storage

-20°C for 1 year