

CD300f Polyclonal Antibody

Description

Product type	Primary Antibody
Code	BT-AP01459
Host	Rabbit
Isotype	IgG
Size	20ul, 50ul, 100ul
Immunogen	The antiserum was produced against synthesized peptide derived from the Internal region of human CD300LF. AA range:41-90
Mol wt	32335
Species reactivity	Human
Clonality	Polyclonal
Recommended application	WB, IHC-p, ELISA
Concentration	1 mg/ml
Full name	CD300f Antibody
Synonyms	CD300LF; CD300F; CLM1; IGSF13; IREM1; NKIR; CMRF35-like molecule 1; CLM-1; CD300 antigen-like family member F; Immune receptor expressed on myeloid cells 1; IREM-1; Immunoglobulin superfamily member 1

This product is for research use only, not for use in human, therapeutic or diagnostic procedure.

Background

CD300LF encodes a member of the CD300 protein family. Members of this family are cell surface glycoproteins with a single IgV-like extracellular domain, and are involved in the regulation of immune response. The CD300 molecule like family member f is an inhibitory receptor. Alternative splicing results in multiple transcript variants.

Recommended Dilution

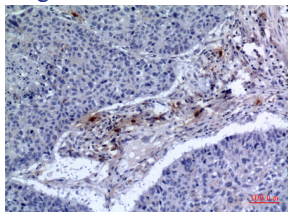
WB: 1: 500 - 1: 2000

IHC-p: 1: 100 - 1: 300

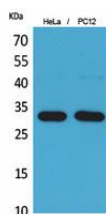
ELISA: 1: 20000

Not yet tested in other applications.

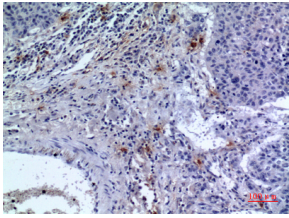
Images



Immunohistochemical analysis of paraffin-embedded human-lung, antibody was diluted at 1:100



Western Blot analysis of HeLa, PC12 cells using CD300f Polyclonal Antibody. Secondary antibody was diluted at 1:20000



Immunohistochemical analysis of paraffin-embedded human-lung, antibody was diluted at 1:100

Storage

-20°C for one year

501 Changsheng S Rd, Nanhu Dist, Jiaxing, Zhejiang, China

Tel: 86 21 31007137 | E-mail: save@bt-laboratory.com | www.bt-laboratory.com