

## CD300g Polyclonal Antibody

### Description

<b>Product type</b>	Primary Antibody
<b>Code</b>	BT-AP01460
<b>Host</b>	Rabbit
<b>Isotype</b>	IgG
<b>Size</b>	20ul, 50ul, 100ul
<b>Immunogen</b>	The antiserum was produced against synthesized peptide derived from the Internal region of human CD300LG. AA range:41-90
<b>Mol wt</b>	36060
<b>Species reactivity</b>	Human
<b>Clonality</b>	Polyclonal
<b>Recommended application</b>	WB, IHC-p, ELISA
<b>Concentration</b>	1 mg/ml
<b>Full name</b>	CD300g Antibody
<b>Synonyms</b>	CD300LG; CLM9; TREM4; CMRF35-like molecule 9; CLM-9; CD300 antigen-like family member G; Triggering receptor expressed on myeloid cells 4; TREM-4; CD300g

This product is for research use only, not for use in human, therapeutic or diagnostic procedure.

### Background

Members of the CD300 (see MIM 606786)-like (CD300L) family, such as CD300LG, are widely expressed on hematopoietic cells. All CD300L proteins are type I cell surface glycoproteins that contain a single immunoglobulin (Ig) V-like domain.

### Recommended Dilution

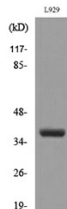
WB: 1: 500 - 1: 2000

IHC-p: 1: 100 - 300

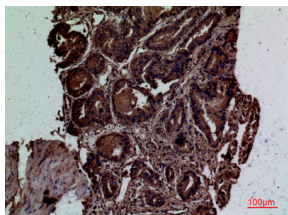
ELISA: 1: 20000

Not yet tested in other applications.

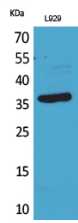
### Images



Western blot analysis of lysate from L929 cells, using CD300LG Antibody.



Immunohistochemical analysis of paraffin-embedded human-prostate-cancer, antibody was diluted at 1:100



Western Blot analysis of L929 cells using CD300g Polyclonal Antibody. Secondary antibody was diluted at 1:20000

### Storage

-20°C for one year

501 Changsheng S Rd, Nanhu Dist, Jiaxing, Zhejiang, China

Tel: 86 21 31007137 | E-mail: [save@bt-laboratory.com](mailto:save@bt-laboratory.com) | [www.bt-laboratory.com](http://www.bt-laboratory.com)