

CD305 Polyclonal Antibody

Description

Product type	Primary Antibody
Code	BT-AP01462
Host	Rabbit
Isotype	IgG
Size	20ul, 50ul, 100ul
Immunogen	The antiserum was produced against synthesized peptide derived from the Internal region of human LAIR1. AA range:21-70
Mol wt	31412
Species reactivity	Human
Clonality	Polyclonal
Recommended application	WB, ELISA
Concentration	1 mg/ml
Full name	CD305 Antibody
Synonyms	LAIR1; CD305; Leukocyte-associated immunoglobulin-like receptor 1; LAIR-1; hLAIR1; CD305

This product is for research use only, not for use in human, therapeutic or diagnostic procedure.

Background

The leukocyte associated immunoglobulin like receptor 1 encoded by LAIR1 is an inhibitory receptor found on peripheral mononuclear cells, including natural killer cells, T cells, and B cells. Inhibitory receptors regulate the immune response to prevent lysis of cells recognized as self. The gene is a member of both the immunoglobulin superfamily and the leukocyte-associated inhibitory receptor family. The gene maps to a region of 19q13. called the leukocyte receptor cluster, which contains at least 29 genes encoding leukocyte-expressed receptors of the immunoglobulin superfamily. The encoded protein has been identified as an anchor for tyrosine phosphatase SHP-1, and may induce cell death in myeloid leukemias. Alternative splicing results in multiple transcript variants.

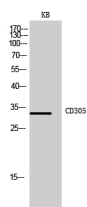
Recommended Dilution

WB: 1: 500 - 1: 2000

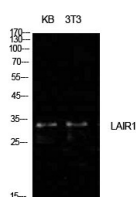
ELISA: 1: 10000

Not yet tested in other applications.

Images



Western Blot analysis of KB cells using CD305 Polyclonal Antibody. Secondary antibody was diluted at 1:20000



Western Blot analysis of KB, NIH-3T3 cells using CD305 Polyclonal Antibody. Secondary antibody was diluted at 1:20000

Storage

-20°C for one year

501 Changsheng S Rd, Nanhu Dist, Jiaxing, Zhejiang, China

Tel: 86 21 31007137 | E-mail: save@bt-laboratory.com | www.bt-laboratory.com