

CD30-L Polyclonal Antibody

Description

Product type	Primary Antibody
Code	BT-AP01467
Host	Rabbit
Isotype	IgG
Size	20ul, 50ul, 100ul
Immunogen	The antiserum was produced against synthesized peptide derived from the Internal region of human TNFSF8. AA range:131-180
Mol wt	26017
Species reactivity	Human
Clonality	Polyclonal
Recommended application	WB, ELISA
Concentration	1 mg/ml
Full name	CD30-L Antibody
Synonyms	TNFSF8; CD30L; CD30LG; Tumor necrosis factor ligand superfamily member 8; CD30 ligand; CD30-L; CD153

This product is for research use only, not for use in human, therapeutic or diagnostic procedure.

Background

The tumor necrosis factor superfamily member 8 encoded by TNFSF8 is a cytokine that belongs to the tumor necrosis factor (TNF) ligand family. This cytokine is a ligand for TNFRSF8/CD30, which is a cell surface antigen and a marker for Hodgkin lymphoma and related hematologic malignancies. The engagement of this cytokine expressed on B cell surface plays an inhibitory role in modulating Ig class switch. This cytokine was shown to enhance cell proliferation of some lymphoma cell lines, while to induce cell death and reduce cell proliferation of other lymphoma cell lines. The pleiotropic biologic activities of this cytokine on different CD30+ lymphoma cell lines may play a pathophysiologic role in Hodgkin's and some non-Hodgkin's lymphomas. Two transcript variants encoding different isoforms have been found for this gene.

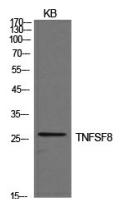
Recommended Dilution

WB: 1: 500 - 1: 2000

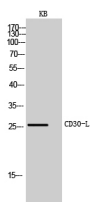
ELISA: 1: 10000

Not yet tested in other applications.

Images



Western Blot analysis of KB cells using CD30-L Polyclonal Antibody. Secondary antibody was diluted at 1:20000



Western Blot analysis of KB cells using CD30-L Polyclonal Antibody. Secondary antibody was diluted at 1:20000

Storage

-20°C for one year

501 Changsheng S Rd, Nanhu Dist, Jiaxing, Zhejiang, China

Tel: 86 21 31007137 | E-mail: save@bt-laboratory.com | www.bt-laboratory.com