

## CD31 Polyclonal Antibody

### Description

Product type	Primary Antibody
Code	BT-AP01469
Host	Rabbit
Isotype	IgG
Size	20ul, 50ul, 100ul
Immunogen	The antiserum was produced against synthesized peptide derived from human CD31. AA range:231-280
Mol wt	82536
Species reactivity	Human, Mouse, Rat
Clonality	Polyclonal
Recommended application	WB, ELISA
Concentration	1 mg/ml
Full name	CD31 Antibody
Synonyms	PECAM1; Platelet endothelial cell adhesion molecule; PECAM-1; EndoCAM; GPIIA'; PECA1; CD antigen CD31

This product is for research use only, not for use in human, therapeutic or diagnostic procedure.

### Background

The protein encoded by PECAM1 (platelet and endothelial cell adhesion molecule 1) is found on the surface of platelets, monocytes, neutrophils, and some types of T-cells, and makes up a large portion of endothelial cell intercellular junctions. The encoded protein is a member of the immunoglobulin superfamily and is likely involved in leukocyte migration, angiogenesis, and integrin activation.

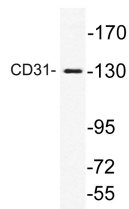
### Recommended Dilution

WB: 1: 500 - 1: 2000

ELISA: 1: 10000

Not yet tested in other applications.

### Images



Western blot analysis of lysate from K562 cells, using CD31 antibody.

### Storage

-20°C for one year