

CD32 Polyclonal Antibody

Description

Product type	Primary Antibody
Code	BT-AP01475
Host	Rabbit
Isotype	IgG
Size	20ul, 50ul, 100ul
Immunogen	Synthesized peptide derived from CD32 . at AA range: 210-290
Mol wt	34044
Species reactivity	Human
Clonality	Polyclonal
Recommended application	WB, ELISA
Concentration	1 mg/ml
Full name	CD32 Antibody
Synonyms	FCGR2B; CD32; FCG2; IGFR2; Low affinity immunoglobulin gamma Fc region receptor II-b; IgG Fc receptor II-b; CDw32; Fc-gamma RII-b; Fc-gamma-RIIb; FcRII-b; CD32

This product is for research use only, not for use in human, therapeutic or diagnostic procedure.

Background

Low affinity immunoglobulin gamma Fc region receptor II-b encoded by FCGR2B is a low affinity receptor for the Fc region of immunoglobulin gamma complexes. The encoded protein is involved in the phagocytosis of immune complexes and in the regulation of antibody production by B-cells. Variations in this gene may increase susceptibility to systemic lupus erythematosus (SLE). Several transcript variants encoding different isoforms have been found for this gene.

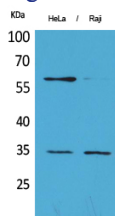
Recommended Dilution

WB: 1: 500 - 1: 2000

ELISA: 1: 20000

Not yet tested in other applications.

Images



Western Blot analysis of HeLa, Raji cells using CD32 Polyclonal Antibody. Secondary antibody was diluted at 1:20000

Storage

-20°C for one year