

CD329 Polyclonal Antibody

Description

Product type	Primary Antibody
Code	BT-AP01480
Host	Rabbit
Isotype	IgG
Size	20ul, 50ul, 100ul
Immunogen	The antiserum was produced against synthesized peptide derived from the Internal region of human SIGLEC8. AA range:81-130
Mol wt	54042
Species reactivity	Human
Clonality	Polyclonal
Recommended application	WB, ELISA
Concentration	1 mg/ml
Full name	CD329 Antibody
Synonyms	SIGLEC8; SAF2; Sialic acid-binding Ig-like lectin 8; Siglec-8; CDw329; Sialoadhesin family member 2; SAF-2; CD329

This product is for research use only, not for use in human, therapeutic or diagnostic procedure.

Background

Sialic acid-binding immunoglobulin (Ig)-like lectins, or SIGLECs (e. G. CD33 (MIM 159590)), are a family of type 1 transmembrane proteins each having a unique expression pattern, mostly in hemopoietic cells. SIGLEC8 is a member of the CD33-like subgroup of SIGLECs, which are localized to 19q13. -q13. and have 2 conserved cytoplasmic tyrosine-based motifs: an immunoreceptor tyrosine-based inhibitory motif, or ITIM (see MIM 604964), and a motif homologous to one identified in signaling lymphocyte activation molecule (SLAM; MIM 603492) that mediates an association with SLAM-associated protein (SAP; MIM 300490) (summarized by Foussias et al. 2000 [PubMed: 11095983]).

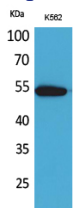
Recommended Dilution

WB: 1: 500 - 1: 2000

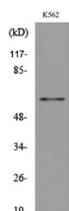
ELISA: 1: 20000

Not yet tested in other applications.

Images



Western Blot analysis of K562 cells using CD329 Polyclonal Antibody. Secondary antibody was diluted at 1:20000



Western blot analysis of lysate from K562 cells, using SIGLEC8 Antibody.

Storage

-20°C for one year

501 Changsheng S Rd, Nanhu Dist, Jiaxing, Zhejiang, China

Tel: 86 21 31007137 | E-mail: save@bt-laboratory.com | www.bt-laboratory.com