

## CD32-B/C Polyclonal Antibody

### Description

Product type	Primary Antibody
Code	BT-AP01483
Host	Rabbit
Isotype	IgG
Size	20ul, 50ul, 100ul
Immunogen	The antiserum was produced against synthesized peptide derived from the Internal region of human FCGR2B/C. AA range:141-190
Mol wt	34044
Species reactivity	Human
Clonality	Polyclonal
Recommended application	WB, ELISA
Concentration	1 mg/ml
Full name	CD32-B/C Antibody
Synonyms	FCGR2B; CD32; FCG2; IGFR2; Low affinity immunoglobulin gamma Fc region receptor II-b; IgG Fc receptor II-b; CDw32; Fc-gamma RII-b; Fc-gamma-RIIb; FcRII-b; CD32; FCGR2C; CD32; FCG2; IGFR2;Low affinity

This product is for research use only, not for use in human, therapeutic or diagnostic procedure.

### Background

Low affinity immunoglobulin gamma Fc region receptor II-b/Low affinity immunoglobulin gamma Fc region receptor II-c encoded by FCGR2B is a low affinity receptor for the Fc region of immunoglobulin gamma complexes. The encoded protein is involved in the phagocytosis of immune complexes and in the regulation of antibody production by B-cells. Variations in this gene may increase susceptibility to systemic lupus erythematosus (SLE). Several transcript variants encoding different isoforms have been found for this gene.

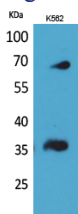
### Recommended Dilution

WB: 1: 500 - 1: 2000

ELISA: 1: 20000

Not yet tested in other applications.

### Images



Western Blot analysis of K562 cells using CD32-B/C Polyclonal Antibody. Secondary antibody was diluted at 1:20000

### Storage

-20°C for one year