

CD32-C Polyclonal Antibody

Description

Product type	Primary Antibody
Code	BT-AP01484
Host	Rabbit
Isotype	IgG
Size	20ul, 50ul, 100ul
Immunogen	The antiserum was produced against synthesized peptide derived from human FCGR2C. AA range:251-300
Mol wt	35578
Species reactivity	Human
Clonality	Polyclonal
Recommended application	WB, ELISA
Concentration	1 mg/ml
Full name	CD32-C Antibody
Synonyms	FCGR2C; CD32; FCG2; IGFR2; Low affinity immunoglobulin gamma Fc region receptor II-c; IgG Fc receptor II-c; CDw32; Fc-gamma RII-c; Fc-gamma-RIIc; FcRII-c; CD antigen CD32

This product is for research use only, not for use in human, therapeutic or diagnostic procedure.

Background

FCGR2C (Fc fragment of IgG receptor IIc (gene/pseudogene)) encodes one of three members of a family of low-affinity immunoglobulin gamma Fc receptors found on the surface of many immune response cells. The encoded protein is a transmembrane glycoprotein and may be involved in phagocytosis and clearing of immune complexes. An allelic polymorphism in FCGR2C results in both coding and non-coding variants.

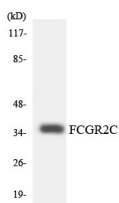
Recommended Dilution

WB: 1: 500 - 1: 2000

ELISA: 1: 40000

Not yet tested in other applications.

Images



Western blot analysis of the lysates from HeLa cells using FCGR2C antibody.

Storage

-20°C for one year