

CD35 Polyclonal Antibody

Description

Product type	Primary Antibody
Code	BT-AP01487
Host	Rabbit
Isotype	IgG
Size	20ul, 50ul, 100ul
Immunogen	The antiserum was produced against synthesized peptide derived from the Internal region of human CR1/CR1L. AA range:300-350 & 740-790
Mol wt	224290
Species reactivity	Human
Clonality	Polyclonal
Recommended application	WB, ELISA
Concentration	1 mg/ml
Full name	CD35 Antibody
Synonyms	complement component (3b/4b) receptor 1/2 (Knops blood group)

This product is for research use only, not for use in human, therapeutic or diagnostic procedure.

Background

CR1 (complement C3b/C4b receptor 1 (Knops blood group)) is a member of the receptors of complement activation (RCA) family and is located in the 'cluster RCA' region of chromosome 1. CR1 encodes a monomeric single-pass type I membrane glycoprotein found on erythrocytes, leukocytes, glomerular podocytes, and splenic follicular dendritic cells. The Knops blood group system is a system of antigens located on this protein. The protein mediates cellular binding to particles and immune complexes that have activated complement. Decreases in expression of this protein and/or mutations in its gene have been associated with gallbladder carcinomas, mesangiocapillary glomerulonephritis, systemic lupus erythematosus and sarcoidosis. Mutations in CR1 have also been associated with a reduction in Plasmodium falciparum rosetting, conferring protection against severe malaria. Alternate allele-specific splice variants, encoding different isoforms, have been characterized. Additional allele specific isoforms, including a secreted form, have been described but have not been fully characterized.

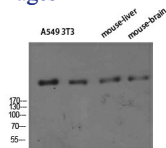
Recommended Dilution

WB: 1: 500 - 2000

ELISA: 1: 10000 - 20000

Not yet tested in other applications.

Images



Western Blot analysis of A549 3T3 mouse-liver mouse-brain cells using CD35 Polyclonal Antibody diluted at 1:800. Secondary antibody was diluted at 1:20000

Storage

-20°C for one year

501 Changsheng S Rd, Nanhu Dist, Jiaxing, Zhejiang, China

Tel: 86 21 31007137 | E-mail: save@bt-laboratory.com | www.bt-laboratory.com