

CD39 Polyclonal Antibody

Description

Product type	Primary Antibody
Code	BT-AP01491
Host	Rabbit
Isotype	IgG
Size	20ul, 50ul, 100ul
Immunogen	The antiserum was produced against synthesized peptide derived from human ENTPD1. AA range:351-400
Mol wt	57965
Species reactivity	Human
Clonality	Polyclonal
Recommended application	WB, ELISA
Concentration	1 mg/ml
Full name	CD39 Antibody
Synonyms	ENTPD1; CD39; Ectonucleoside triphosphate diphosphohydrolase 1; NTPDase 1; Ecto-ATP diphosphohydrolase 1; Ecto-ATPDase 1; Ecto-ATPase 1; Ecto-apyrase; Lymphoid cell activation antigen; CD antigen CD39

This product is for research use only, not for use in human, therapeutic or diagnostic procedure.

Background

The protein encoded by ENTPD1 (ectonucleoside triphosphate diphosphohydrolase 1) is a plasma membrane protein that hydrolyzes extracellular ATP and ADP to AMP. Inhibition of this protein's activity may confer anticancer benefits. Several transcript variants encoding different isoforms have been found for ENTPD1.

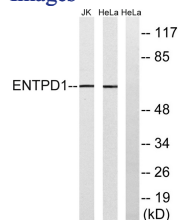
Recommended Dilution

WB: 1: 500 - 1: 2000

ELISA: 1: 20000

Not yet tested in other applications.

Images



Western blot analysis of lysates from HeLa and Jurkat cells, using ENTPD1 Antibody. The lane on the right is blocked with the synthesized peptide.

Storage

-20°C for one year