

CD39 Polyclonal Antibody

Description

Product type	Primary Antibody
Code	BT-AP01492
Host	Rabbit
Isotype	IgG
Size	20ul, 50ul, 100ul
Immunogen	The antiserum was produced against synthesized peptide derived from the Internal region of human ENTPD1. AA range:31-80
Mol wt	57965
Species reactivity	Human, Mouse, Rat
Clonality	Polyclonal
Recommended application	WB, ELISA
Concentration	1 mg/ml
Full name	CD39 Antibody
Synonyms	ENTPD1; CD39; Ectonucleoside triphosphate diphosphohydrolase 1; NTPDase 1; Ecto-ATP diphosphohydrolase 1; Ecto-ATPDase 1; Ecto-ATPase 1; Ecto-apyrase; Lymphoid cell activation antigen; CD39

This product is for research use only, not for use in human, therapeutic or diagnostic procedure.

Background

Ectonucleoside triphosphate diphosphohydrolase 1 encoded by ENTPD1 is a plasma membrane protein that hydrolyzes extracellular ATP and ADP to AMP. Inhibition of this protein's activity may confer anticancer benefits. Several transcript variants encoding different isoforms have been found for this gene.

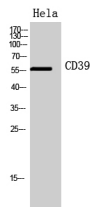
Recommended Dilution

WB: 1: 500 - 1: 2000

ELISA: 1: 10000

Not yet tested in other applications.

Images



Western Blot analysis of HeLa cells using CD39 Polyclonal Antibody. Secondary antibody was diluted at 1:20000

Storage

-20°C for one year