

## CD3EAP Polyclonal Antibody

### Description

<b>Product type</b>	Primary Antibody
<b>Code</b>	BT-AP01493
<b>Host</b>	Rabbit
<b>Isotype</b>	IgG
<b>Size</b>	20ul, 50ul, 100ul
<b>Immunogen</b>	The antiserum was produced against synthesized peptide derived from human CD3EAP. AA range:441-490
<b>Mol wt</b>	54986
<b>Species reactivity</b>	Human
<b>Clonality</b>	Polyclonal
<b>Recommended application</b>	WB, IHC-p, ELISA
<b>Concentration</b>	1 mg/ml
<b>Full name</b>	CD3EAP Antibody
<b>Synonyms</b>	CD3EAP; ASE1; CAST; PAF49; DNA-directed RNA polymerase I subunit RPA34; A34.5; Antisense to ERCC-1 protein; ASE-1; CD3-epsilon-associated protein; CAST; CD3E-associated protein; RNA polymerase I-assoc

This product is for research use only, not for use in human, therapeutic or diagnostic procedure.

### Background

DNA-dependent RNA polymerase catalyzes the transcription of DNA into RNA using the four ribonucleoside triphosphates as substrates. Component of RNA polymerase I which synthesizes ribosomal RNA precursors. Isoform 1 is involved in UBTF-activated transcription, presumably at a step following PIC formation. Isoform 2 has been described as a component of preformed T-cell receptor (TCR) complex.

### Recommended Dilution

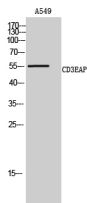
WB: 1: 500 - 1: 2000

IHC: 1: 100 - 1: 300

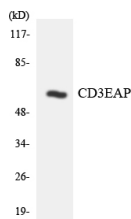
ELISA: 1: 40000

Not yet tested in other applications.

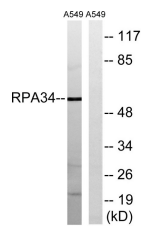
### Images



Western Blot analysis of A549 cells using CD3EAP Polyclonal Antibody cells nucleus.



Western blot analysis of the lysates from HUVEC cells using CD3EAP antibody.



Western blot analysis of lysates from A549 cells, using CD3EAP Antibody. The lane on the right is blocked with the synthesized peptide.

### Storage

-20°C for one year

501 Changsheng S Rd, Nanhu Dist, Jiaxing, Zhejiang, China

Tel: 86 21 31007137 | E-mail: [save@bt-laboratory.com](mailto:save@bt-laboratory.com) | [www.bt-laboratory.com](http://www.bt-laboratory.com)