

CENP-M Polyclonal Antibody

Description

Product type	Primary Antibody
Code	BT-AP01502
Host	Rabbit
Isotype	IgG
Size	100ul, 50ul, 20ul
Immunogen	Synthesized peptide derived from human CENP-M
Mol wt	N/A
Species reactivity	Human, Rat, Mouse
Clonality	Polyclonal
Recommended application	IHC-p, IF, WB
Concentration	1 mg/ml
Full name	CENP-M
Synonyms	CENP-M; Centromere protein M; CENP-M; Interphase centromere complex protein 39; Proliferation-associated nuclear element protein 1

This product is for research use only, not for use in human, therapeutic or diagnostic procedure.

Background

The protein encoded by this gene is an inner protein of the kinetochore, the multi-protein complex that binds spindle microtubules to regulate chromosome segregation during cell division. It belongs to the constitutive centromere-associated network protein group, whose members interact with outer kinetochore proteins and help to maintain centromere identity at each cell division cycle. The protein is structurally related to GTPases but cannot bind guanosine triphosphate. A point mutation that affects interaction with another constitutive centromere-associated network protein, CENP-I, impairs kinetochore assembly and chromosome alignment, suggesting that it is required for kinetochore formation. Alternative splicing results in multiple transcript variants.

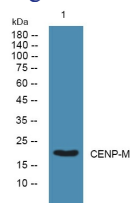
Recommended Dilution

WB: 1: 500 - 1: 2000

IHC-p: 1: 50 - 1: 200

Not yet tested in other applications.

Images



Western blot analysis of lysates from SH-SY5Y cells, primary antibody was diluted at 1:1000, 4°C overnight

Storage

-20°C for 1 year