

CD50 Polyclonal Antibody

Description

Product type	Primary Antibody
Code	BT-AP01510
Host	Rabbit
Isotype	IgG
Size	20ul, 50ul, 100ul
Immunogen	The antiserum was produced against synthesized peptide derived from human CD50/ICAM-3. AA range:484-533
Mol wt	59384
Species reactivity	Human
Clonality	Polyclonal
Recommended application	WB, IF, ELISA
Concentration	1 mg/ml
Full name	CD50 Antibody
Synonyms	ICAM3; Intercellular adhesion molecule 3; ICAM-3; CDw50; ICAM-R; CD antigen CD50

This product is for research use only, not for use in human, therapeutic or diagnostic procedure.

Background

The intercellular adhesion molecule 3 encoded by ICAM3 is a member of the intercellular adhesion molecule (ICAM) family. All ICAM proteins are type I transmembrane glycoproteins, contain 2-9 immunoglobulin-like C2-type domains, and bind to the leukocyte adhesion LFA-1 protein. This protein is constitutively and abundantly expressed by all leucocytes and may be the most important ligand for LFA-1 in the initiation of the immune response. It functions not only as an adhesion molecule, but also as a potent signalling molecule. Alternative splicing results in multiple transcript variants encoding different isoforms.

Recommended Dilution

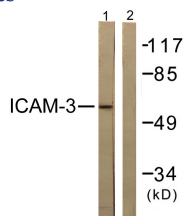
WB: 1: 500 - 1: 2000

IF: 1: 200 - 1: 1000

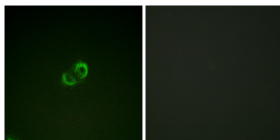
ELISA: 1: 5000

Not yet tested in other applications.

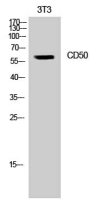
Images



Western blot analysis of lysates from NIH/3T3 cells, treated with TNF-a 20ng/ml 5', using CD50/ICAM-3 Antibody. The lane on the right is blocked with the synthesized peptide.



Immunofluorescence analysis of A549 cells, using CD50/ICAM-3 Antibody. The picture on the right is blocked with the synthesized peptide.



Western Blot analysis of NIH-3T3 cells using CD50 Polyclonal Antibody

Storage

-20°C for one year

501 Changsheng S Rd, Nanhu Dist, Jiaxing, Zhejiang, China

Tel: 86 21 31007137 | E-mail: save@bt-laboratory.com | www.bt-laboratory.com