

## CD56 Polyclonal Antibody

### Description

|                                |  |
|--------------------------------|--|
| <b>Product type</b>            | Primary Antibody   |
| <b>Code</b>                    | BT-AP01515   |
| <b>Host</b>                    | Rabbit   |
| <b>Isotype</b>                 | IgG  |
| <b>Size</b>                    | 20ul, 50ul, 100ul  |
| <b>Immunogen</b>               | The antiserum was produced against synthesized peptide derived from the Internal region of human NCAM1. AA range:241-290 |
| <b>Mol wt</b>                  | 94574  |
| <b>Species reactivity</b>      | Human  |
| <b>Clonality</b>               | Polyclonal   |
| <b>Recommended application</b> | WB, ELISA  |
| <b>Concentration</b>           | 1 mg/ml  |
| <b>Full name</b>               | CD56 Antibody  |
| <b>Synonyms</b>                | NCAM1; NCAM; Neural cell adhesion molecule 1; N-CAM-1; NCAM-1; CD56  |

This product is for research use only, not for use in human, therapeutic or diagnostic procedure.

### Background

NCAM1 encodes a cell adhesion protein which is a member of the immunoglobulin superfamily. The neural cell adhesion molecule 1 is involved in cell-to-cell interactions as well as cell-matrix interactions during development and differentiation. The encoded protein has been shown to be involved in development of the nervous system, and for cells involved in the expansion of T cells and dendritic cells which play an important role in immune surveillance. Alternative splicing results in multiple transcript variants.

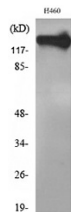
### Recommended Dilution

WB: 1: 500 - 1: 2000

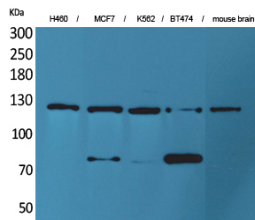
ELISA: 1: 20000

Not yet tested in other applications.

### Images



Western blot analysis of lysate from H460 cells, using NCAM1 Antibody.



Western Blot analysis of H460, MCF7, K562, BT474, mouse brain cells using CD56 Polyclonal Antibody. Secondary antibody was diluted at 1:20000

## Storage

-20°C for one year

501 Changsheng S Rd, Nanhu Dist, Jiaxing, Zhejiang, China

Tel: 86 21 31007137 | E-mail: [save@bt-laboratory.com](mailto:save@bt-laboratory.com) | [www.bt-laboratory.com](http://www.bt-laboratory.com)