

CD6 Polyclonal Antibody

Description

Product type	Primary Antibody
Code	BT-AP01522
Host	Rabbit
Isotype	IgG
Size	20ul, 50ul, 100ul
Immunogen	The antiserum was produced against synthesized peptide derived from human CD6. AA range:250-299
Mol wt	71829
Species reactivity	Human
Clonality	Polyclonal
Recommended application	WB, ELISA
Concentration	1 mg/ml
Full name	CD6 Antibody
Synonyms	CD6; T-cell differentiation antigen CD6; T12; TP120; CD antigen CD6

This product is for research use only, not for use in human, therapeutic or diagnostic procedure.

Background

CD6 (CD6 molecule) encodes a protein found on the outer membrane of T-lymphocytes as well as some other immune cells. The encoded protein contains three scavenger receptor cysteine-rich (SRCR) domains and a binding site for an activated leukocyte cell adhesion molecule. CD6 product is important for continuation of T cell activation. CD6 may be associated with susceptibility to multiple sclerosis (PMID: 19525953, 21849685). Multiple transcript variants encoding different isoforms have been found for CD6.

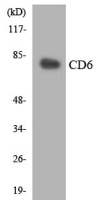
Recommended Dilution

WB: 1: 500 - 1: 2000

ELISA: 1: 40000

Not yet tested in other applications.

Images



Western blot analysis of the lysates from HT-29 cells using CD6 antibody.

Storage

-20°C for one year