

CD7 Polyclonal Antibody

Description

Product type	Primary Antibody
Code	BT-AP01533
Host	Rabbit
Isotype	IgG
Size	20ul, 50ul, 100ul
Immunogen	The antiserum was produced against synthesized peptide derived from the Internal region of human CD7. AA range:51-100
Mol wt	25409
Species reactivity	Human
Clonality	Polyclonal
Recommended application	WB, IHC-p, ELISA
Concentration	1 mg/ml
Full name	CD7 Antibody
Synonyms	CD7; T-cell antigen CD7; GP40; T-cell leukemia antigen; T-cell surface antigen Leu-9; TP41; CD7

This product is for research use only, not for use in human, therapeutic or diagnostic procedure.

Background

CD7 encodes a transmembrane protein which is a member of the immunoglobulin superfamily. T-cell antigen CD7 is found on thymocytes and mature T cells. It plays an essential role in T-cell interactions and also in T-cell/B-cell interaction during early lymphoid development.

Recommended Dilution

WB: 1: 500 - 1: 2000

IHC-p: 1: 100 - 300

ELISA: 1: 20000

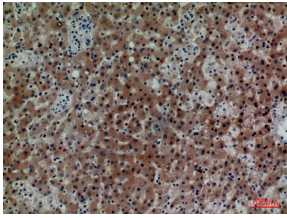
Not yet tested in other applications.

Images

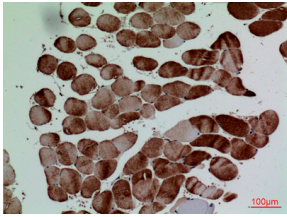


Western Blot analysis of K562 cells using CD7 Polyclonal Antibody. Secondary antibody was diluted at 1:20000

Western blot analysis of lysate from K562 cells, using CD7 Antibody.



Immunohistochemical analysis of paraffin-embedded human-liver, antibody was diluted at 1:100



Immunohistochemical analysis of paraffin-embedded human-muscle, antibody was diluted at 1:100

Storage

-20°C for one year

501 Changsheng S Rd, Nanhu Dist, Jiaxing, Zhejiang, China

Tel: 86 21 31007137 | E-mail: save@bt-laboratory.com | www.bt-laboratory.com