

CD75 Polyclonal Antibody

Description

Product type	Primary Antibody
Code	BT-AP01541
Host	Rabbit
Isotype	IgG
Size	20ul, 50ul, 100ul
Immunogen	The antiserum was produced against synthesized peptide derived from human ST6GAL1. AA range:171-220
Mol wt	46605
Species reactivity	Human, Mouse, Rat
Clonality	Polyclonal
Recommended application	WB, IHC-p, ELISA
Concentration	1 mg/ml
Full name	CD75 Antibody
Synonyms	ST6GAL1; SIAT1; Beta-galactoside alpha-2; 6-sialyltransferase 1; Alpha 2,6-ST 1; B-cell antigen CD75; CMP-N-acetylneuraminate-beta-galactosamide-alpha-2,6-sialyltransferase 1; ST6Gal I; ST6GalII; Sialy

This product is for research use only, not for use in human, therapeutic or diagnostic procedure.

Background

ST6GAL1 (ST6 beta-galactoside alpha-2,6-sialyltransferase 1) encodes a member of glycosyltransferase family 29. The encoded protein is a type II membrane protein that catalyzes the transfer of sialic acid from CMP-sialic acid to galactose-containing substrates. The protein, which is normally found in the Golgi but can be proteolytically processed to a soluble form, is involved in the generation of the cell-surface carbohydrate determinants and differentiation antigens HB-6, CD75, and CD76. ST6GAL1 has been incorrectly referred to as CD75. Three transcript variants encoding two different isoforms have been described.

Recommended Dilution

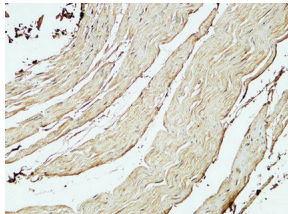
WB: 1: 500 - 1: 2000

IHC: 1: 100 - 1: 300

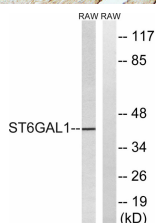
ELISA: 1: 40000

Not yet tested in other applications.

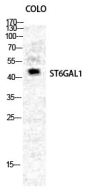
Images



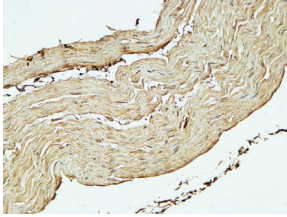
Immunohistochemical analysis of paraffin-embedded Human stomach. 1, Antibody was diluted at 1:200(4° overnight). 2, High-pressure and temperature EDTA, pH8.0 was used for antigen retrieval. 3,Secondary antibody was diluted at 1:200(room temperature, 30min).



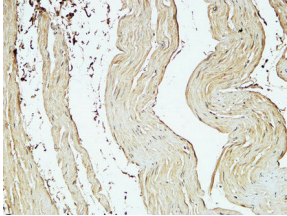
Western blot analysis of lysates from RAW264.7 cells, using ST6GAL1 Antibody. The lane on the right is blocked with the synthesized peptide.



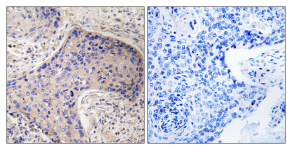
Western Blot analysis of COLO cells using CD75 Polyclonal Antibody diluted at 1:2000



Immunohistochemical analysis of paraffin-embedded Human stomach. 1, Antibody was diluted at 1:200(4° overnight). 2, High-pressure and temperature EDTA, pH8.0 was used for antigen retrieval. 3,Secondary antibody was diluted at 1:200(room temperature, 30min).



Immunohistochemical analysis of paraffin-embedded Human stomach. 1, Antibody was diluted at 1:200(4° overnight). 2, High-pressure and temperature EDTA, pH8.0 was used for antigen retrieval. 3,Secondary antibody was diluted at 1:200(room temperature, 30min).



Immunohistochemistry analysis of paraffin-embedded human prostate carcinoma tissue, using ST6GAL1 Antibody. The picture on the right is blocked with the synthesized peptide.

Storage

-20°C for one year

501 Changsheng S Rd, Nanhu Dist, Jiaxing, Zhejiang, China

Tel: 86 21 31007137 | E-mail: save@bt-laboratory.com | www.bt-laboratory.com