

CD81 Polyclonal Antibody

Description

Product type	Primary Antibody
Code	BT-AP01546
Host	Rabbit
Isotype	IgG
Size	20ul, 50ul, 100ul
Immunogen	The antiserum was produced against synthesized peptide derived from the Internal region of human CD81. AA range:111-160
Mol wt	25809
Species reactivity	Human, Mouse, Rat
Clonality	Polyclonal
Recommended application	IF, WB, ELISA
Concentration	1 mg/ml
Full name	CD81 Antibody
Synonyms	CD81; TAPA1; TSPAN28; CD81 antigen; 26 kDa cell surface protein TAPA-1; Target of the antiproliferative antibody 1; Tetraspanin-28; Tspan-28; CD81

This product is for research use only, not for use in human, therapeutic or diagnostic procedure.

Background

Platelet glycoprotein Ib alpha chain encoded by CD81 is a member of the transmembrane 4 superfamily, also known as the tetraspanin family. Most of these members are cell-surface proteins that are characterized by the presence of four hydrophobic domains. The proteins mediate signal transduction events that play a role in the regulation of cell development, activation, growth and motility. This encoded protein is a cell surface glycoprotein that is known to complex with integrins. This protein appears to promote muscle cell fusion and support myotube maintenance. Also it may be involved in signal transduction. This gene is localized in the tumor-suppressor gene region and thus it is a candidate gene for malignancies. Two transcript variants encoding different isoforms have been found for this gene.

Recommended Dilution

WB: 1: 500 - 1: 2000

ELISA: 1: 20000

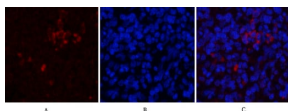
IF: 1: 50 - 200

Not yet tested in other applications.

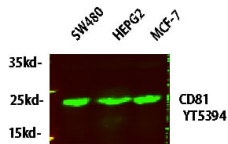
Images



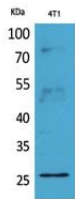
Western blot analysis of lysate from 4T1 cells, using CD81 Antibody.



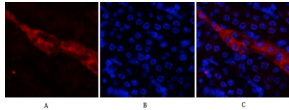
Immunofluorescence analysis of rat-spleen tissue. 1,CD81 Polyclonal Antibody(red) was diluted at 1:200(4°C,overnight). 2, Cy3 labeled Secondary antibody was diluted at 1:300(room temperature, 50min),3, Picture B: DAPI(blue) 10min. Picture A:Target. Picture B: DAPI. Picture C: merge of A+B



Western blot analysis of lysates from HT-29, NIH/3T3, and HepG2 cells, primary antibody was diluted at 1:1000, 4° over night, secondary antibody(cat: RS23920)was diluted at 1:10000, 37° 1hour.



Western Blot analysis of 4T1 cells using CD81 Polyclonal Antibody. Antibody was diluted at 1:2000. Secondary antibody was diluted at 1:20000



Immunofluorescence analysis of mouse-kidney tissue. 1,CD81 Polyclonal Antibody(red) was diluted at 1:200(4°C,overnight). 2, Cy3 labeled Secondary antibody was diluted at 1:300(room temperature, 50min).3, Picture B: DAPI(blue) 10min. Picture A:Target. Picture B: DAPI. Picture C: merge of A+B

Storage

-20°C for one year

501 Changsheng S Rd, Nanhu Dist, Jiaxing, Zhejiang, China

Tel: 86 21 31007137 | E-mail: save@bt-laboratory.com | www.bt-laboratory.com