

AL4A1 Rabbit Polyclonal Antibody

Description

Product type	Primary Antibody
Code	BT-AP01547
Host	Rabbit
Isotype	IgG
Size	100ul, 50ul, 20ul
Immunogen	Synthesized peptide derived from human AL4A1
Mol wt	N/A
Species reactivity	Human, Mouse, Rat
Clonality	Polyclonal
Recommended application	WB
Concentration	1 mg/ml
Full name	AL4A1
Synonyms	AL4A1; Delta-1-pyrroline-5-carboxylate dehydrogenase; mitochondrial; P5C dehydrogenase; EC 1.5.1.12; Aldehyde dehydrogenase family 4 member A1)

This product is for research use only, not for use in human, therapeutic or diagnostic procedure.

Background

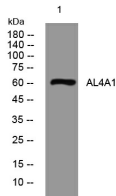
This protein belongs to the aldehyde dehydrogenase family of proteins. This enzyme is a mitochondrial matrix NAD-dependent dehydrogenase which catalyzes the second step of the proline degradation pathway, converting pyrroline-5-carboxylate to glutamate. Deficiency of this enzyme is associated with type II hyperprolinemia, an autosomal recessive disorder characterized by accumulation of delta-1-pyrroline-5-carboxylate (P5C) and proline. Alternatively spliced transcript variants encoding different isoforms have been identified for this gene.

Recommended Dilution

WB: 1: 500 - 1: 2000

Not yet tested in other applications.

Images



Western blot analysis of lysates from A431 cells, primary antibody was diluted at 1:1000, 4°C overnight

Storage

-20°C for 1 year