

CD88 Polyclonal Antibody

Description

Product type	Primary Antibody
Code	BT-AP01556
Host	Rabbit
Isotype	IgG
Size	20ul, 50ul, 100ul
Immunogen	The antiserum was produced against synthesized peptide derived from human CD88/C5aR. AA range:301-350
Mol wt	39321
Species reactivity	Human
Clonality	Polyclonal
Recommended application	WB, IHC-p, IF, ELISA
Concentration	1 mg/ml
Full name	CD88 Antibody
Synonyms	C5AR1; C5AR; C5R1; C5a anaphylatoxin chemotactic receptor; C5a-R; C5aR; CD antigen CD88

This product is for research use only, not for use in human, therapeutic or diagnostic procedure.

Background

CD88, also known as C5a receptor (C5aR), is a G protein-coupled integral membrane protein. CD88, which is expressed on neutrophils, monocytes, macrophages, hepatocytes and mast cells, as well as on various epithelial and endothelial cells, serves as a receptor for the inflammatory peptide C5a. Research studies suggest a role for CD88 in the inflammatory response. The binding of C5a to CD88 has been shown to elicit increased production of acute phase proteins in liver. In brain, an increased production of CD88 has been shown to be associated with inflammation. Research also indicates a role for C5a/C5aR in the pathogenesis of rheumatoid arthritis, as well as a heightened responsiveness of human bronchial epithelial cells (HBECs) to C5a upon exposure of these cells to cigarette smoke and other environmental irritants.

Recommended Dilution

WB: 1: 500 - 1: 2000

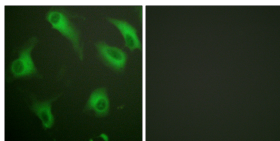
IHC: 1: 100 - 1: 300

IF: 1: 200 - 1: 1000

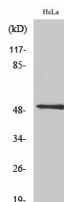
ELISA: 1: 5000

Not yet tested in other applications.

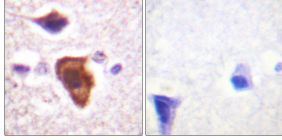
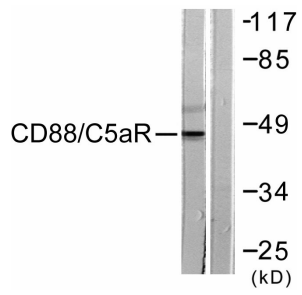
Images



Immunofluorescence analysis of HeLa cells, using CD88/C5aR Antibody. The picture on the right is blocked with the synthesized peptide.



Western Blot analysis of various cells using CD88 Polyclonal Antibody



Storage

-20°C for one year

501 Changsheng S Rd, Nanhu Dist, Jiaxing, Zhejiang, China

Tel: 86 21 31007137 | E-mail: save@bt-laboratory.com | www.bt-laboratory.com