

## CD96 Polyclonal Antibody

### Description

<b>Product type</b>	Primary Antibody
<b>Code</b>	BT-AP01565
<b>Host</b>	Rabbit
<b>Isotype</b>	IgG
<b>Size</b>	20ul, 50ul, 100ul
<b>Immunogen</b>	The antiserum was produced against synthesized peptide derived from the Internal region of human CD96. AA range:291-340
<b>Mol wt</b>	64350
<b>Species reactivity</b>	Human
<b>Clonality</b>	Polyclonal
<b>Recommended application</b>	WB, ELISA
<b>Concentration</b>	1 mg/ml
<b>Full name</b>	CD96 Antibody
<b>Synonyms</b>	CD96; T-cell surface protein tactile; Cell surface antigen CD96; T cell-activated increased late expression protein; CD96

This product is for research use only, not for use in human, therapeutic or diagnostic procedure.

### Background

The CD96 molecule encoded by CD96 belongs to the immunoglobulin superfamily. It is a type I membrane protein. The protein may play a role in the adhesive interactions of activated T and NK cells during the late phase of the immune response. It may also function in antigen presentation. Alternative splicing generates multiple transcript variants encoding distinct isoforms.

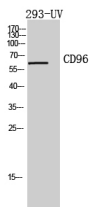
### Recommended Dilution

WB: 1: 500 - 1: 2000

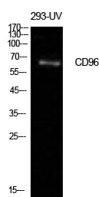
ELISA: 1: 10000

Not yet tested in other applications.

### Images



Western Blot analysis of 293-UV cells using CD96 Polyclonal Antibody diluted at 1:500. Secondary antibody was diluted at 1:20000



Western Blot analysis of 293-UV cells using CD96 Polyclonal Antibody. Antibody was diluted at 1:500. Secondary antibody was diluted at 1:20000

## Storage

-20°C for one year

501 Changsheng S Rd, Nanhu Dist, Jiaxing, Zhejiang, China

Tel: 86 21 31007137 | E-mail: [save@bt-laboratory.com](mailto:save@bt-laboratory.com) | [www.bt-laboratory.com](http://www.bt-laboratory.com)